

City of Moreno Valley Community Facilities District No. 1 Park Maintenance

Special Districts Division
Public Works Department

Annual Special Tax Report

2019/20

Report Date: April 2019

14177 Frederick Street
PO Box 88005
Moreno Valley, CA 92552
specialdistricts@moval.org
951.413.3480



TABLE OF CONTENTS

I. INTRODUCTION	1
A. Description of Proceedings	1
B. The District.....	1
i. Boundaries of the District.....	1
ii. Boundaries of the Future Annexation Area.....	2
iii. Future Annexations	2
iv. Description of Services	2
II. CFD NO. 1 FUNDED PARK FACILITIES	3
III. COMPUTATION OF THE SPECIAL TAX REQUIREMENT	4
A. Maintenance and Operation Services	4
B. Administrative Expenses.....	4
C. Reserve Fund	4
D. Special Tax Requirement.....	5
IV. SPECIAL TAX CALCULATION	6
A. Special Tax Rate.....	6
B. Method of Apportionment.....	7
C. Delinquencies	8
V. SPECIAL TAX ALLOCATION (TAX ROLL)	9
Appendix A: Annexations	A-1
Appendix B: District Map	B-1
Appendix C: Tax Roll	C-1

TABLES

Table 1: Summary of Actions	1
Table 2: Park Facilities.....	3
Table 3: Proposed Special Tax Requirement	5
Table 4: Land Use Categories	6
Table 5: Special Tax Rate.....	7
Table 6: Delinquencies	8
Table 7: Special Tax Allocation Summary	9
Table 8: Annexations	A-1
Table 9: Tax Roll.....	C-1

LIST OF PARTICIPANTS

Community Facilities District No. 1

City Contacts

Patti Solano
Parks & Community Services Director
14075 Frederick Street
P.O. Box 88005
Moreno Valley, CA 92552-0805
951.413.3280
pattis@moval.org

Candace E. Cassel
Special Districts Division Manager
14177 Frederick Street
P.O. Box 88005
Moreno Valley, CA 92552-0805
951.413.3480
candacec@moval.org

Special Tax Consultant

Matthew E. Webb
Albert A. Webb Associates
3788 McCray Street
Riverside, CA 92506
951.686.1070
matt.webb@webbassociates.com

Special Counsel

Warren B. Diven
Best Best & Krieger LLP
655 West Broadway, 15th Floor
San Diego, CA 92101
619.525.1337
warren.diven@bbklaw.com

I. INTRODUCTION

A. DESCRIPTION OF PROCEEDINGS

The City Council of the City of Moreno Valley, acting in its capacity as President and Members of the Board of Directors for the Moreno Valley Community Services District (“CSD Board”), formed Community Facilities District No. 1 (“CFD No. 1” or “District”) to fund public services related to new parks constructed after the formation of the District and authorized the levy of a special tax onto the property tax roll of those parcels annexed into the District. Financial responsibility for maintenance of new parks is placed on those properties that created the need for the additional park facilities. The District was established under the authority of the Mello-Roos Community Facilities Act of 1982. New residential developments that will benefit from new or future parks are approved on the condition they participate in funding the services of the District. The following table provides a summary of the actions, which were taken in the formation of the District.

Table 1: Summary of Actions

Document	Number	Date
Resolution Adopting a Boundary Map	CSD 2003-08	May 27, 2003
Resolution of Intention to Establish the District	CSD 2003-09	May 27, 2003
Resolution Removing Certain Territory, Approving an Amended Boundary Map, and Forming and Establishing the District	CSD 2003-23	July 8, 2003
Urgency Ordinance Authorizing the Levy of a Special Tax	CSD-40	July 8, 2003
Ordinance Authorizing the Levy of a Special Tax	CSD-41	August 26, 2003
Resolution Authorizing Future Annexation of Territory	CSD 2003-26	July 8, 2003

B. THE DISTRICT

The CSD Board formed CFD No. 1 in 2003 to fund public services for park improvements added to the CFD.

i. BOUNDARIES OF THE DISTRICT

The original District included five tracts identified by parcel numbers in Appendix “C” of the June 2003 Community Facilities District Report, prepared by Albert A. Webb Associates. Following the Public Hearing on July 8, 2003, the CSD Board amended the May 27, 2003 boundary map to delete two of the five identified tracts, Tentative Tracts 30708 and 29857. Tentative Tracts 31050, 30998, and 30924 formed the original District, which represented 154 dwelling units. In December 2004, Tentative Tract 30708 annexed into the District as part of Annexation No. 2004-5. Tentative Tract 29857 may be annexed into the District in the future. The parcel associated with Tentative Tract 30998 was later acquired by the Moreno Valley Unified School District and is now exempt from the special tax under the rates and method of apportionment of special tax (RMA), adjusting the original parcel count of the District to 107 parcels.

ii. BOUNDARIES OF THE FUTURE ANNEXATION AREA

The boundaries of the future annexation area encompass the City boundary at the time the District was formed.

iii. FUTURE ANNEXATIONS

As a requirement of development, single-family and multi-family projects are approved on the condition they provide a funding source to support the operations and ongoing maintenance of the facilities within the District. The qualified elector can either annex into the District or fund an endowment to cover the ongoing obligation for the project. The endowment would be placed into a separate trust account; the financial obligation of the parcel(s) contributing will be withdrawn and used to offset the annual special tax requirement of that parcel(s) for the District. Appendix A provides a summary of the annexations conducted since the District was formed. As of the date of this report, the endowment option has not been selected as a way to satisfy the condition of approval for development.

iv. DESCRIPTION OF SERVICES

The types of public services that can be funded from the levy of special taxes in the District, including the Future Annexation Area, for the benefit of the park improvements in the District are described as follows:

The maintenance and/or repair of Parks and Park Improvements, including, but not limited to, the planting, replanting, mowing, trimming, irrigation and fertilization of grass, trees, shrubs, and other ornamental plants and vegetation; the operation, maintenance, repair, and replacement of irrigation systems associated with Parks and Park Improvements; and all efforts by Park Rangers that are devoted to the maintenance of the Parks, Park Improvements, and public safety. "Parks and Park Improvements" are defined as park improvements, which are to be developed, constructed, installed, and maintained within the area of CFD No. 1 and which will be owned and operated by the CSD for the benefit of the residents of the District.

II. CFD NO. 1 FUNDED PARK FACILITIES

The following summary provides a list of the various facility types, which shall be maintained in whole or in part through the levy and collection of special taxes from CFD No. 1.

Table 2: Park Facilities

PARKS*			
Project Name	Location	Tract No.	Opening Date
Vista Lomas Park	North side of Iris Ave.	30286	September 9, 2003
Shadow Mountain Park	North side of Presidio Hills Dr.	23553	January 27, 2004
Towngate II Park	Arbor Park Lane	29143	January 14, 2005
Celebration Park	John F Kennedy Dr. and Oliver St.	22709	June 3, 2006
Rock Ridge Park	East of Nason St.	32834	June 22, 2009
Lasselle Sports Park	West side of Lasselle St.	PM 30352	September 27, 2014
Rancho Verde Park	East side of Lasselle St.	30321	TBD
Patriot Park	SEC Perris Blvd. and Filaree Ave.	2995	June 14, 2010
TBD	SWC of Brodiaea Ave. and Redlands Blvd.	-	TBD
Hound Town Dog Park	11150 Redlands Blvd.	-	January 30, 2014
Hidden Springs Passive Park	SWC of Brodiaea Ave. and Redlands Blvd.	PM 20970	December 31, 2015
Santiago Park	SEC Indian St. and Santiago Ave.	36760	TBD
EQUESTRIAN FACILITIES			
Project Name	Location	Tract No.	Opening Date
Rancho Verde Equestrian Staging	East side of Lasselle St.	30321	January 29, 2007
Cottonwood Staging Area	North side of Cottonwood Ave.	31269	December 10, 2007
Cold Creek Trail Head	27334 Cold Creek Court	32834	October 26, 2010
AQUEDUCT BIKEWAY			
Project Name	Location	Tract No.	Opening Date
Aqueduct Bikeway	South of Bay Ave. to west side of Graham St.	15387	April 18, 2007
Aqueduct Bikeway	South of Delphinium Ave. to north of Perham Ct.	19711	April 18, 2007
Aqueduct Bikeway	Aqueduct Way from Pan Am Blvd. to Cottonwood Ave.	10895	April 18, 2007
Aqueduct Bikeway	South of Perham Ct. to north of John F Kennedy Dr.	19711	April 18, 2007
Aqueduct Bikeway	East of Heacock St. between Cactus Ave. and Unity Ct.	9829-1	April 18, 2007
Aqueduct Bikeway	South of JFK Dr. SEC of Indian St./Vandenberg Dr. to NWC of Oakham Ct./Fay Ave.	10006	October 27, 2009
Aqueduct Bikeway	South of Dracaea Ave. east of Elsworth St. to Pan Am Blvd.	32215	TBD
Aqueduct Bikeway	North of Gentian between Perris and Indian	22180-2	May 27, 2019**
MULTI-USE TRAILS			
Project Name	Trail Head to End of Trail Development	Tract No.	Opening Date
Moreno Valley Ranch	Durham Cr. & Avalon Ave.	30233	June 23, 2005
Cactus Trails	Cactus Ave. west of Oliver St.	31128	November 8, 2005
Cactus Trails	South side of Cactus Ave. from Oliver St. east to end of Tract 22709	22709	November 8, 2005
Cactus Trails	South side of Cactus Ave. w/of Moreno Beach Blvd. to end of Tract 31889	31889	June 19, 2006
Rancho Verde Trails	Second tract N/E of Rancho Verde Staging	30318	July 11, 2006
Rancho Verde Trails	First tract N/E of Rancho Verde Staging	30321	July 11, 2006
Quincy Ch. Trails	Quincy Channel Trail Between Cottonwood Ave. and Bay Ave.	31284	November 8, 2006
Redlands Blvd. Trails	West side of Redlands Blvd. at Cottonwood Ave. north to Dracaea Ave.	31269	May 14, 2007
Cottonwood Trails	Cottonwood Ave. Trail from Redlands Blvd. to Quincy Channel	31269-1	May 14, 2007
Auto Mall Trails	Trail extension east of Auto Mall Trail to Tract 32835	PM 30882	August 20, 2007
Cottonwood Trails	Cottonwood Ave. east of Quincy St.	31269	April 8, 2008
Redlands Blvd. Trails	Redlands Blvd. Trails South of Cottonwood Ave.	32625	August 1, 2008
Iris Ave Trails	Trail behind tract 29920	29920	September 16, 2008
Iris Ave Trails	Trail from tract 29920 to tract 22936	30268	September 16, 2008
Nason Trails (Cold Creek)	Trails south east of Nason St. and Eucalyptus Ave.	32834	October 26, 2010
Quincy Ch. Trails	Quincy Channel Trail Between Cactus Ave. and Brodiaea Ave.	31129	January 16, 2012
Eucalyptus Ave. Trails East	Eucalyptus Ave from Redlands to Theodore	PM 35629	TBD
Aldi Trail	Eucalyptus Ave from Quincy to Redlands Blvd.	PM 35607	July 1, 2015
Covey Ranch	East Perris Blvd. at Covey	31592	TBD
Cactus Corridor	Brodiaea and Quincy	36436	TBD
Eucalyptus Ave. Trails West	Fire Station 58 to Quincy	35679	May 30, 2019**

* Additional Park Facilities may be listed in the Parks, Recreation and Open Space Comprehensive Master Plan.

** Denotes tentative opening dates as of the date of this report.

III. COMPUTATION OF THE SPECIAL TAX REQUIREMENT

The City shall levy and collect the special tax consistent with the RMA, which was approved by the legislative body of CFD No. 1 and the qualified electors of CFD No. 1. The special tax requirement includes the costs related to maintenance and operation services for District facilities, administrative expenses, and replenishment of the contingency reserve fund for each year. Other available revenues are taken into account when calculating the special tax and may be used to offset the annual special tax requirement.

A. MAINTENANCE AND OPERATION SERVICES

The District shall provide for the ongoing maintenance of park improvements and all efforts by the Park Rangers associated with facilities described in Section II. Maintenance and Operation services are further described in Section I.B.iv: Description of Services.

B. ADMINISTRATIVE EXPENSES

Administrative expenses are those directly related to the administration of CFD No. 1. In addition, the Administrative expense includes but is not limited to costs related to the City's general administrative services, overhead for personnel support, space rent and maintenance, insurance, CSD Board support, City Manager support, purchasing, and communications.

C. RESERVE FUND

Per the RMA, a contingency reserve is to be maintained for the District in an amount equal to ten percent (10%) of the estimated costs of providing the Services and estimated Administrative Expenses for any fiscal year (FY) to provide for the payment of unexpected costs, which may be incurred in the FY.

D. SPECIAL TAX REQUIREMENT

The following table sets forth a summary of the Proposed Special Tax Requirement for FY 2019/20.

Table 3: Proposed Special Tax Requirement

GROSS REQUIREMENT	
Personnel Services	\$ 683,273.00
Operations and Maintenance	442,000.00
Material & Supplies	91,600.00
Debt Service	-
Fixed Charges (Overhead, Administration, & Replacement)	144,431.00
Fixed Assets	-
Gross Special Tax Requirement*	\$ 1,361,304.00
CREDITS: CONTRIBUTIONS & TRANSFERS	
Transfer from Community Services District Zone E-8	\$ (30,220.00)
Use of Money & Property	(7,170.00)
Fund Balance Contribution/(Draw)	(5,278.16)
Total Contributions/Transfers	\$ (42,668.16)
TOTAL NET SPECIAL TAX REQUIREMENT	\$ 1,318,635.84

* Based on the CSD Board Approved Budget.

IV. SPECIAL TAX CALCULATION

A levy of special tax shall be collected annually at the same time and in the same manner as the ad valorem property taxes are collected and shall be subject to the same penalties and the same procedure, sale and lien priority in case of delinquency as applicable for ad valorem taxes; however, the CSD Board may utilize a direct billing procedure for any special taxes that cannot be collected on the Riverside County property tax bill or may, by resolution, elect to collect the special taxes at a different time or in a different manner if necessary to meet its financial obligations.

A. SPECIAL TAX RATE

The special tax rate per dwelling unit (DU) that can be levied by the CSD Board in any FY is calculated using the Land Use Categories listed in Table 4 and the Special Tax Rate listed in Table 5.

The maximum special tax rate shall be increased by the percentage increase in the Los Angeles-Long Beach-Anaheim¹ Regional Consumer Price Index (CPI) for All Urban Consumers, as published by the Department of Labor's Bureau of Labor Statistics, since the beginning of the preceding FY, or by two percent (2%), whichever is greater, beginning on July 1, 2004, for FY 2004/05 and on each subsequent July 1 for the FY then commencing.

In accordance with the RMA, property classified as commercial or industrial and publicly owned or dedicated property shall be identified as exempt with regard to the special tax. The exemption also applies to sliver parcels, common lots, open space, or any other property that cannot be developed.

Table 4: Land Use Categories

Land Use Category	Description	Dwelling Units
1	Single-family Residential and Multifamily Residential	One (1) / Residence or Residential Unit
2	All Other Property	Two (2) / Acre

¹ In January 2018, the Bureau of Labor Statistics introduced a new geographic area sample for the CPI. Riverside, CA, which was previously included in the Los Angeles-Riverside-Orange County, CA MSA (Metropolitan Statistical Area), will now be included in a separate CBSA (Core Based Statistical Area) and will be considered a new index named Riverside-San Bernardino-Ontario, starting at 100.000. The Los Angeles-Riverside-Orange County, CA index was renamed "Los Angeles-Long Beach-Anaheim". Because the CPI approved by the qualified electors was the Los Angeles-Riverside-Orange County index, and it was renamed and not eliminated, CSD General Counsel determined the District would continue to use the Los Angeles-Long Beach-Anaheim index.

Table 5: Special Tax Rate

Fiscal Year	Annual Adjustment*	Maximum Special Tax	Applied Special Tax**
2003/04	-	\$ 115.00	\$ 115.00
2004/05	2.00%	117.30	117.00
2005/06	4.40%	122.46	119.00
2006/07	4.50%	127.96	119.00
2007/08	3.30%	132.18	119.00
2008/09	4.20%	137.72	120.00
2009/10	2.00%	140.46	120.00
2010/11	2.00%	143.26	120.00
2011/12	2.00%	146.12	120.00
2012/13	2.17%	149.29	120.00
2013/14	2.00%	152.28	120.00
2014/15	2.00%	155.33	122.40
2015/16	2.00%	158.44	124.84
2016/17	2.03%	161.66	127.36
2017/18	2.00%	164.89	134.36
2018/19	3.61%	170.84	141.74
2019/20	3.24%	176.37	146.32

* New CPI Index effective FY 2019/20.

**The amount applied cannot exceed the maximum special tax and per County requirements can only be an even number.

B. METHOD OF APPORTIONMENT

For each FY, the CSD Board shall determine the amount of the special tax to be levied and collected to pay for (a) the estimated costs of providing the identified services, (b) the amount estimated for administrative expenses, and (c) the amount required to fund or replenish the contingency reserve (collectively defined as the "Special Tax Requirement"). The special tax shall be levied on all non-exempt parcels in the District, in an amount per DU, based on the Land Use Categories, up to the Special Tax Requirement. The amount of special tax to be levied on any parcel shall not exceed the amount calculated by multiplying the DUs for the parcel by the maximum special tax rate for the FY.

C. DELINQUENCIES

Listed below is a summary of the delinquencies for the District.

Table 6: Delinquencies

FY	Amount Levied	Amount Delinquent ^(1,2)	Number of Delinquent Parcels	Percent Delinquent
2005/06	\$ 376,079.00	\$ -	0	0.00%
2006/07	766,598.00	-	0	0.00%
2007/08	926,058.00	-	0	0.00%
2008/09	941,400.00	-	0	0.00%
2009/10	959,280.00	-	0	0.00%
2010/11	967,680.00	-	0	0.00%
2011/12	967,560.00	-	0	0.00%
2012/13	975,720.00	-	0	0.00%
2013/14	975,720.00	180.00	2	0.02%
2014/15	995,234.40	856.80	10	0.09%
2015/16	1,030,803.88	1,248.40	11	0.12%
2016/17	1,087,654.40	1,846.72	17	0.17%
2017/18	1,188,548.56	5,038.50	51	0.42%
2018/19	1,277,219.14	29,186.31	377	2.29%

⁽¹⁾ Amount delinquent for 2018/19 as of January 2019.

⁽²⁾ Amount delinquent for all other FYs as of July 2018 due to County's software transition and the unavailability of Paid/Unpaid Reports.

Source: Riverside County Paid/Unpaid Reports

V. SPECIAL TAX ALLOCATION (TAX ROLL)

The special tax shall be levied on non-exempt property within the District.

Table 7 lists each tract number or development name that is part of the District, the number of DUs in each tract or development, and the total levy for that tract or development based on the FY 2019/20 applied special tax. For FY 2019/20, there are 9,012 taxable DUs included in the District. A detailed Tax Roll by parcel is included in Appendix C.

Table 7: Special Tax Allocation Summary

Tract No./ Development Name	DUs	Applied Tax per DU	Total Special Tax Levy	Tract No./ Development Name	DUs	Applied Tax per DU	Total Special Tax Levy
Alessandro Apts.	320	\$ 146.32	\$ 46,822.40	31255	17	146.32	2,487.44
BRE Prop Inc	268	146.32	39,213.76	31257	17	146.32	2,487.44
Broadstone at Valley View	256	146.32	37,457.92	31268	26	146.32	3,804.32
Broadstone Vistas Apts.	246	146.32	35,994.72	31269-1	107	146.32	15,656.24
Hemlock Family Apts.	78	146.32	11,412.96	31284	144	146.32	21,070.08
Oakwood Apts.	241	146.32	35,263.12	31305	86	146.32	12,583.52
Palm Desert Apts.	150	146.32	21,948.00	31326	77	146.32	11,266.64
Reserve at Moreno Valley Ranch	176	146.32	25,752.32	31327	65	146.32	9,510.80
Stonewate 552	552	146.32	80,768.64	31414	31	146.32	4,535.92
Lasselle Place Apts.	304	146.32	44,481.28	31424	37	146.32	5,413.84
Villa Camille, LP (Apts)	112	146.32	16,387.84	31494	12	146.32	1,755.84
Williams (Custom Home)	1	146.32	146.32	31591	33	146.32	4,828.56
Riverview Partners, LP (Apts)	266	146.32	38,921.12	31592	114	146.32	16,680.48
Sadik (Custom Home)	1	146.32	146.32	31618	55	146.32	8,047.60
Fernandez (Custom Home)	1	146.32	146.32	31789	24	146.32	3,511.68
OM MacArthur LLC (Apts)	39	146.32	5,706.48	32005	213	146.32	31,166.16
Continental Dev (Apts)	125	146.32	18,290.00	32018	77	146.32	11,266.64
Latham Homes Inc. (Custom Home)	1	146.32	146.32	32142	168	146.32	24,581.76
27523	114	146.32	16,680.48	32143	41	146.32	5,999.12
27593	101	146.32	14,778.32	32144	62	146.32	9,071.84
29732	165	146.32	24,142.80	32145	165	146.32	24,142.80
29920	297	146.32	43,457.04	32146	125	146.32	18,290.00
30233	92	146.32	13,461.44	32194	32	146.32	4,682.24
30316	189	146.32	27,654.48	32210	20	146.32	2,926.40
30318	171	146.32	25,020.72	32505	71	146.32	10,388.72
30319	111	146.32	16,241.52	32515	174	146.32	25,459.68
30320	319	146.32	46,676.08	32625	20	146.32	2,926.40
30321	133	146.32	19,460.56	32715	36	146.32	5,267.52
30476	80	146.32	11,705.60	32834	205	146.32	29,995.60
30708	20	146.32	2,926.40	36933	274	146.32	40,091.68
30714	83	146.32	12,144.56	32836	129	146.32	18,875.28
30921	65	146.32	9,510.80	33256	100	146.32	14,632.00
30924	32	146.32	4,682.24	33436	105	146.32	15,363.60
30967	33	146.32	4,828.56	33437	36	146.32	5,267.52
31050	75	146.32	10,974.00	33962	31	146.32	4,535.92
31120	51	146.32	7,462.32	34299	67	146.32	9,803.44
31128	262	146.32	38,335.84	36436	94	146.32	13,754.08
31129	109	146.32	15,948.88	36598	8	146.32	1,170.56
31149	10	146.32	1,463.20	36505	16	146.32	2,341.12
31212	146	146.32	21,362.72	36882	40	146.32	5,852.80
31213	63	146.32	9,218.16				
Subtotal 1	5,858		\$ 857,142.56	Subtotal 2	3,154		\$ 461,493.28
Special Tax Levy							
Subtotal 1							\$ 857,142.56
Subtotal 2							461,493.28
Total Special Tax Levy							\$ 1,318,635.84

Appendix A: Annexations

Table 8: Annexations

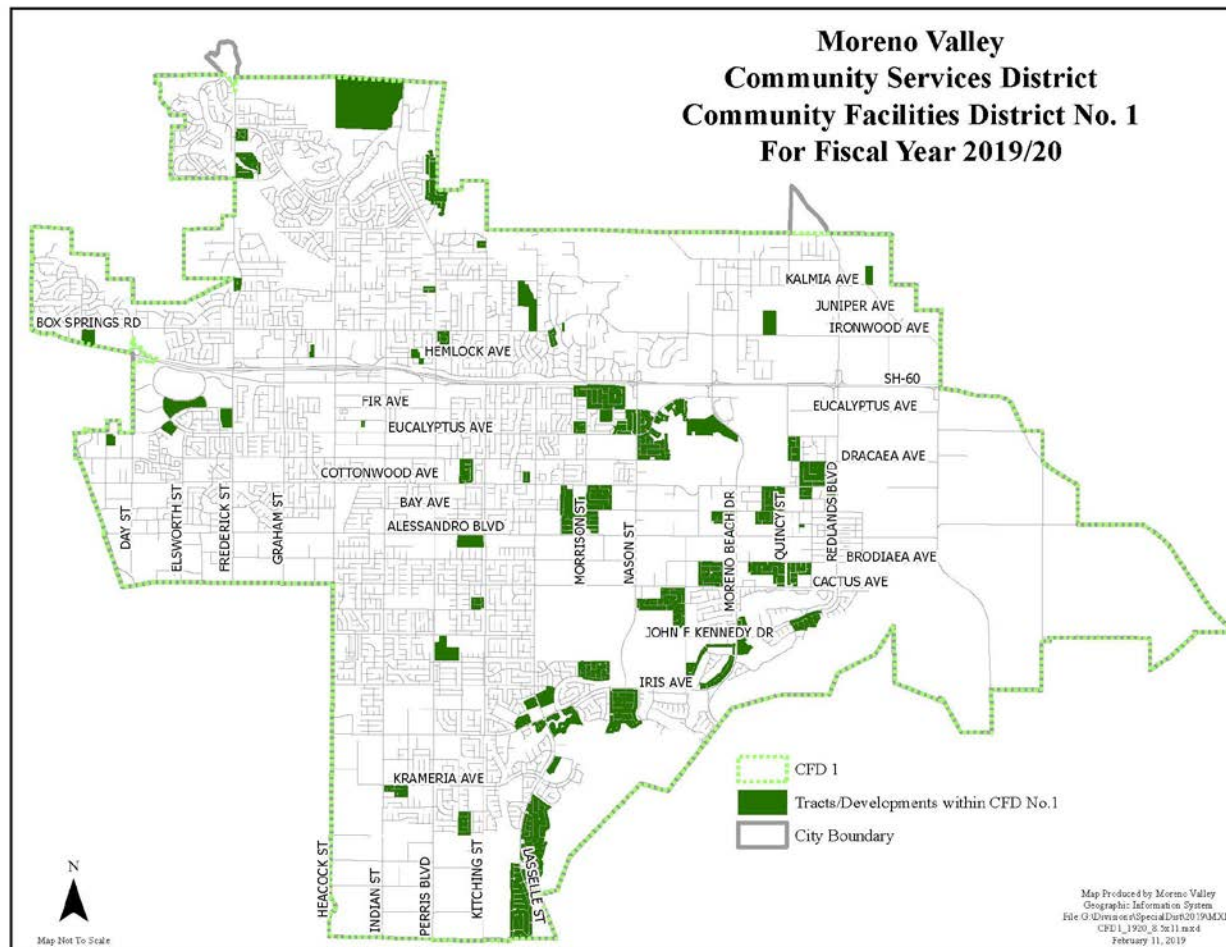
FY	Annexation Number	Tract No./ Development Name	Number of DUs	Resolution No.	Date of Annexation
2003/04	2003-1	30316	189	CSD 2003-28	Nov. 25, 2003
2003/04	2003-1	30714	83	CSD 2003-28	Nov. 25, 2003
2003/04	2003-1	30319	111	CSD 2003-28	Nov. 25, 2003
2003/04	2003-1	30233	92	CSD 2003-28	Nov. 25, 2003
2003/04	2003-1	30320	319	CSD 2003-28	Nov. 25, 2003
2003/04	2003-2	27523	114	CSD 2004-03	March 23, 2004
2003/04	2003-2	30318	171	CSD 2004-03	March 23, 2004
2003/04	2003-2	30476	80	CSD 2004-03	March 23, 2004
2004/05	2004-3	30321	133	CSD 2004-18	July 13, 2004
2004/05	2004-3	31120	51	CSD 2004-18	July 13, 2004
2004/05	2004-3	31255	17	CSD 2004-18	July 13, 2004
2004/05	2004-4	29732	165	CSD 2004-25	Nov. 23, 2004
2004/05	2004-5	27593	101	CSD 2004-26	Dec. 14, 2004
2004/05	2004-5	30708	20	CSD 2004-26	Dec. 14, 2004
2004/05	2004-5	31128	262	CSD 2004-26	Dec. 14, 2004
2004/05	2004-5	31268	26	CSD 2004-26	Dec. 14, 2004
2004/05	2004-5	31269-1	107	CSD 2004-26	Dec. 14, 2004
2005/06	2005-6	29920	297	CSD 2005-13	July 12, 2005
2005/06	2005-6	31212	146	CSD 2005-13	July 12, 2005
2005/06	2005-6	31327	65	CSD 2005-13	July 12, 2005
2005/06	2005-7	BRE Prop Inc	268	CSD 2005-14	July 12, 2005
2005/06	2005-7	Lasselle Place Apts.	304	CSD 2005-14	July 12, 2005
2005/06	2005-8	30967	33	CSD 2005-18	Sept. 13, 2005
2005/06	2005-8	31129	109	CSD 2005-18	Sept. 13, 2005
2005/06	2005-8	31213	63	CSD 2005-18	Sept. 13, 2005
2005/06	2005-8	31284	144	CSD 2005-18	Sept. 13, 2005
2005/06	2005-8	31326	77	CSD 2005-18	Sept. 13, 2005
2005/06	2005-8	31424	37	CSD 2005-18	Sept. 13, 2005
2005/06	2005-8	32142	168	CSD 2005-18	Sept. 13, 2005
2005/06	2005-8	32143	41	CSD 2005-18	Sept. 13, 2005
2005/06	2005-8	32144	62	CSD 2005-18	Sept. 13, 2005
2005/06	2005-8	32210	20	CSD 2005-18	Sept. 13, 2005
2005/06	2005-9	Reserve at Moreno Valley Ranch	176	CSD 2005-19	Oct. 25, 2005
2005/06	2005-10	32145	165	CSD 2006-07	April 11, 2006
2005/06	2005-10	32146	125	CSD 2006-07	April 11, 2006
2005/06	2005-11	32018	77	CSD 2006-08	April 11, 2006
2005/06	2006-12	31257	17	CSD 2006-09	April 11, 2006
2005/06	2006-13	32834	205	CSD 2006-10	April 11, 2006
2005/06	2006-13	36933	274	CSD 2006-10	April 11, 2006
2005/06	2006-13	32836	129	CSD 2006-10	April 11, 2006
2005/06	2006-14	Stonegate 552	552	CSD 2006-13	June 13, 2006
2005/06	2006-15	Alessandro Apts.	320	CSD 2006-14	June 13, 2006
2005/06	2006-15	31494	12	CSD 2006-14	June 13, 2006
2005/06	2006-15	31591	33	CSD 2006-14	June 13, 2006
2005/06	2006-15	32625	20	CSD 2006-14	June 13, 2006
2005/06	2006-15	33437	36	CSD 2006-14	June 13, 2006

FY	Annexation Number	Tract No./ Development Name	Number of DUs	Resolution No.	Date of Annexation
2005/06	2006-16	Broadstone at Valley View	256	CSD 2006-15	June 13, 2006
2005/06	2006-17	31149	10	CSD 2006-16	June 13, 2006
2006/07	2006-18	30921	65	CSD 2006-29	Sept. 12, 2006
2006/07	2006-19	Broadstone Vistas Apts.	246	CSD 2006-30	Sept. 12, 2006
2006/07	2006-22	31618	55	CSD 2007-01	Jan. 9, 2007
2006/07	2006-22	32194	32	CSD 2007-01	Jan. 9, 2007
2006/07	2006-22	32715	36	CSD 2007-01	Jan. 9, 2007
2006/07	2006-20	33256	100	CSD 2007-07	May 22, 2007
2006/07	2006-21	33436	105	CSD 2007-08	May 22, 2007
2006/07	2007-23	32005	213	CSD 2007-09	May 22, 2007
2006/07	2007-24	32515	174	CSD 2007-10	May 22, 2007
2006/07	2007-25	Oakwood Apts.	241	CSD 2007-11	May 22, 2007
2006/07	2007-26	34299	67	CSD 2007-12	May 22, 2007
2007/08	2007-27	33962	31	CSD 2008-02	Feb. 12, 2008
2007/08	2008-28	31414	31	CSD 2008-04	May 27, 2008
2008/09	2008-29	Palm Desert Apts.	150	CSD 2008-21	Sept. 23, 2008
2009/10	2009-30	32505	71	CSD 2010-01	Jan. 12, 2010
2011/12	2011-31	Hemlock Family Apts.	78	CSD 2011-25	Dec. 13, 2011
2014/15	2014-32	36598	8	CSD 2014-22	Oct. 14, 2014
2014/15	2015-33	36436	94	CSD 2015-02	Jan. 27, 2015
2014/15	2015-34	31789	24	CSD 2015-03	Feb. 10, 2015
2015/16	2015-35	Villa Camille, LP (Apts)	112	CSD 2015-30	Oct. 13, 2015
2015/16	2015-36	M. Williams (Custom Home)	1	CSD 2015-30	Oct. 13, 2015
2015/16	2015-37	31592 ¹	114	CSD 2015-34	Dec. 1, 2015
2015/16	2016-38	36882	40	CSD 2016-03	Apr. 5, 2016
2015/16	2016-39	35606	16	CSD 2016-10	May 3, 2016
2016/17	2017-40	Riverview Partners, LP (Apts)	266	CSD 2017-04	April 18, 2017
2016/17	2017-41	31305	86	CSD 2017-05	May 2, 2017
2016/17	2017-42	N. Sadik (Custom Home)	1	CSD 2017-23	June 20, 2017
2017/18	2017-43	J. Fernandez (Custom Home)	1	CSD 2017-28	Dec. 5, 2017
2017/18	2017-44	OM MacArthur LLC	39	CSD 2017-28	Dec. 5, 2017
2017/18	2018-45	Continental East Fund III	125	CSD 2018-08	May 1, 2018
2018/19	2019-46	Latham Homes Inc. (Custom Home)	1	CSD 2019-09	May 7, 2019
Total Annexed Dwelling Units			8,905		
Original District Boundaries			107		
Total Dwelling Units			9,012		

¹ The parcels associated with this Tract were outside the future annexation area boundaries of the District. A full Public Hearing process was conducted to annex this development into the District.

Appendix B: District Map

Map 1: Tracts/Developments within CFD No. 1



Appendix C: Tax Roll

Table 9: Tax Roll

Community Facilities District No. 1 (Park Maintenance) FY 2019/20 Tax Roll

APN	CFD No. 1 FY 2019/20 Applied Rate	APN	CFD No. 1 FY 2019/20 Applied Rate
260480001	\$146.32	260510001	\$146.32
260480002	146.32	260510002	146.32
260480003	146.32	260510003	146.32
260480004	146.32	260510004	146.32
260480005	146.32	260510005	146.32
260480006	146.32	260510006	146.32
260480007	146.32	291671055	146.32
260480008	146.32	291671056	146.32
260480009	146.32	291671057	146.32
260480010	146.32	291671058	146.32
260480011	146.32	291671059	146.32
260480012	146.32	291671060	146.32
260480013	146.32	291671061	146.32
260480014	146.32	291671062	146.32
260480015	146.32	291671063	146.32
260480016	146.32	291671064	146.32
260480017	146.32	291671065	146.32
260480018	146.32	291671066	146.32
260480019	146.32	291671068	146.32
260480020	146.32	291671069	146.32
260480021	146.32	291671070	146.32
260480022	146.32	291671071	146.32
260480023	146.32	291671072	146.32
260480024	146.32	308610010	2,341.12
260480025	146.32	308611025	146.32
260480026	146.32	308613054	146.32
260480027	146.32	308613055	146.32
260480028	146.32	308613056	146.32
260480029	146.32	308613057	146.32
260480030	146.32	308620001	146.32
260480031	146.32	308620002	146.32
260480032	146.32	308620003	146.32
260480033	146.32	308620004	146.32
260480034	146.32	308620005	146.32
260480035	146.32	308620006	146.32
260480036	146.32	308620007	146.32
260480037	146.32	308620008	146.32
260480038	146.32	308620009	146.32
260480039	146.32	308620010	146.32
260480040	146.32	308620011	146.32
260480041	146.32	308620012	146.32
260480042	146.32	308620013	146.32
260480043	146.32	308620014	146.32
260480044	146.32	308620015	146.32
260480045	146.32	308620016	146.32
260480046	146.32	308620017	146.32
260480047	146.32	308620018	146.32
260480048	146.32	308620019	146.32
260480049	146.32	308620020	146.32
260480050	146.32	308620021	146.32

Community Facilities District No. 1 (Park Maintenance) FY 2019/20 Tax Roll

APN	CFD No. 1 FY 2019/20 Applied Rate	APN	CFD No. 1 FY 2019/20 Applied Rate
260480051	146.32	308620022	146.32
260480052	146.32	308620023	146.32
260480053	146.32	308620024	146.32
260480054	146.32	308620025	146.32
260480055	146.32	308620026	146.32
260480056	146.32	308620027	146.32
260480057	146.32	308620028	146.32
260480058	146.32	308620029	146.32
260480059	146.32	308620030	146.32
260480060	146.32	308620031	146.32
260480061	146.32	308620032	146.32
260480062	146.32	308620033	146.32
260480063	146.32	308620034	146.32
260480064	146.32	308620035	146.32
260480065	146.32	308620036	146.32
260480066	146.32	308620037	146.32
260480067	146.32	308620038	146.32
260480068	146.32	308620039	146.32
260480069	146.32	308620040	146.32
260480070	146.32	308620045	146.32
260480071	146.32	308621001	146.32
260480072	146.32	308621002	146.32
260480073	146.32	308621003	146.32
260490001	146.32	308621004	146.32
260490002	146.32	308621005	146.32
260490003	146.32	308621006	146.32
260490004	146.32	308621007	146.32
260490005	146.32	308621008	146.32
260490006	146.32	308621009	146.32
260490007	146.32	312313013	146.32
260490008	146.32	312313014	146.32
260490009	146.32	312313015	146.32
260490010	146.32	312313016	146.32
260490011	146.32	312313017	146.32
260490012	146.32	312313018	146.32
260490013	146.32	312313019	146.32
260490014	146.32	312313020	146.32
260490015	146.32	312313021	146.32
260490016	146.32	312313022	146.32
260490017	146.32	312313023	146.32
260490018	146.32	312313024	146.32
260490019	146.32	312313025	146.32
260490020	146.32	312313026	146.32
260490021	146.32	312313027	146.32
260490022	146.32	312313028	146.32
260490023	146.32	312313029	146.32
260490024	146.32	312313030	146.32
260490025	146.32	312313031	146.32
260490026	146.32	312313032	146.32
260490027	146.32	312313033	146.32

Community Facilities District No. 1 (Park Maintenance) FY 2019/20 Tax Roll

APN	CFD No. 1 FY 2019/20 Applied Rate	APN	CFD No. 1 FY 2019/20 Applied Rate
260490028	146.32	312313034	146.32
260490029	146.32	312313035	146.32
260490030	146.32	312313036	146.32
260490031	146.32	312313037	146.32
260490032	146.32	312313038	146.32
260490033	146.32	312313039	146.32
260490034	146.32	312313040	146.32
260490035	146.32	312320001	146.32
260490036	146.32	312320002	146.32
260490037	146.32	312320003	146.32
260490038	146.32	312320004	146.32
260490039	146.32	312320005	146.32
260490040	146.32	312320006	146.32
260490041	146.32	312320007	146.32
260490042	146.32	312320008	146.32
260490043	146.32	312320009	146.32
260490044	146.32	312320010	146.32
260490045	146.32	312320011	146.32
260490046	146.32	312321001	146.32
260490047	146.32	312321002	146.32
260490048	146.32	312321003	146.32
260490049	146.32	312321004	146.32
260490050	146.32	312321005	146.32
260490051	146.32	312322001	146.32
260490052	146.32	312322002	146.32
260490053	146.32	312322003	146.32
260490054	146.32	312322004	146.32
260490055	146.32	312322005	146.32
260490056	146.32	312322006	146.32
260490057	146.32	312322007	146.32
260490058	146.32	312322008	146.32
260490059	146.32	312322009	146.32
260490060	146.32	312322010	146.32
260500001	146.32	312322011	146.32
260500002	146.32	312322012	146.32
260500003	146.32	312322013	146.32
260500004	146.32	312322014	146.32
260500005	146.32	312322015	146.32
260500006	146.32	312322016	146.32
260500007	146.32	312322017	146.32
260500008	146.32	312322018	146.32
260500009	146.32	312322019	146.32
260500010	146.32	312322020	146.32
260500011	146.32	312322021	146.32
260500012	146.32	312322022	146.32
260500013	146.32	312322023	146.32
260500014	146.32	312322024	146.32
260500015	146.32	312322025	146.32
260500016	146.32	312322026	146.32
260500017	146.32	312322027	146.32

Community Facilities District No. 1 (Park Maintenance) FY 2019/20 Tax Roll

APN	CFD No. 1 FY 2019/20 Applied Rate	APN	CFD No. 1 FY 2019/20 Applied Rate
260500018	146.32	312322028	146.32
260500019	146.32	312322029	146.32
260500020	146.32	312322030	146.32
260500021	146.32	312322031	146.32
260500022	146.32	312322032	146.32
260500023	146.32	312322033	146.32
260500024	146.32	312322034	146.32
260500025	146.32	312322035	146.32
260500026	146.32	312322036	146.32
260500027	146.32	312322037	146.32
260500028	146.32	312322038	146.32
260500029	146.32	312322039	146.32
260500030	146.32	312322040	146.32
260500031	146.32	312322041	146.32
260500032	146.32	312322042	146.32
260500033	146.32	312322043	146.32
260500034	146.32	312322044	146.32
260500035	146.32	312322045	146.32
260500036	146.32	312322046	146.32
260500037	146.32	312322047	146.32
260500038	146.32	312323001	146.32
260500039	146.32	312323002	146.32
260500040	146.32	312323003	146.32
260500041	146.32	312323004	146.32
260510007	146.32	312323005	146.32
260510008	146.32	312323006	146.32
260510009	146.32	312323007	146.32
260510010	146.32	312324001	146.32
260510011	146.32	312324002	146.32
260510012	146.32	312324003	146.32
260510013	146.32	312330001	146.32
260510014	146.32	312330002	146.32
260510015	146.32	312330003	146.32
260510016	146.32	312330004	146.32
260510017	146.32	312330005	146.32
260510018	146.32	312330006	146.32
260510019	146.32	312330007	146.32
260510020	146.32	312330008	146.32
260510021	146.32	312330009	146.32
260510022	146.32	312330010	146.32
260510023	146.32	312331001	146.32
260510024	146.32	312331002	146.32
260510025	146.32	312331003	146.32
260510026	146.32	312331004	146.32
260510027	146.32	312331005	146.32
260510028	146.32	312331006	146.32
260510029	146.32	312331007	146.32
260510030	146.32	312331008	146.32
260510031	146.32	312331009	146.32
263120028	16,387.84	312331010	146.32

Community Facilities District No. 1 (Park Maintenance) FY 2019/20 Tax Roll

APN	CFD No. 1 FY 2019/20 Applied Rate	APN	CFD No. 1 FY 2019/20 Applied Rate
264440001	146.32	312332001	146.32
264440002	146.32	312332002	146.32
264440003	146.32	312332003	146.32
264440004	146.32	312332004	146.32
264440005	146.32	312332005	146.32
264440006	146.32	312332006	146.32
264440007	146.32	312332007	146.32
264440008	146.32	312332008	146.32
264440009	146.32	312332009	146.32
264440010	146.32	312332010	146.32
264440011	146.32	312333001	146.32
264440012	146.32	312333002	146.32
264440013	146.32	312333003	146.32
264440014	146.32	312333005	146.32
264440015	146.32	312333006	146.32
264440016	146.32	312333007	146.32
264440017	146.32	312333008	146.32
291050075	38,921.12	312334001	146.32
291110017	80,768.64	312334002	146.32
291110022	39,213.76	312334003	146.32
291671001	146.32	312334004	146.32
291671002	146.32	312334005	146.32
291671003	146.32	312334007	146.32
291671004	146.32	312334008	146.32
291671005	146.32	312334009	146.32
291671006	146.32	312334010	146.32
291671007	146.32	312334011	146.32
291671008	146.32	312334012	146.32
291671009	146.32	312334013	146.32
291671010	146.32	312334014	146.32
291671011	146.32	312334015	146.32
291671012	146.32	312334016	146.32
291671014	146.32	312334017	146.32
291671015	146.32	312334018	146.32
291671016	146.32	312334019	146.32
291671017	146.32	312334020	146.32
291671018	146.32	312334021	146.32
291671019	146.32	312334022	146.32
291671020	146.32	312334023	146.32
291671021	146.32	312334024	146.32
291671022	146.32	312334025	146.32
291671023	146.32	312334026	146.32
291671024	146.32	312334027	146.32
291671025	146.32	312334028	146.32
291671026	146.32	312334029	146.32
291671028	146.32	312334030	146.32
291671029	146.32	312340002	146.32
291671030	146.32	312340003	146.32
291671031	146.32	312340004	146.32
291671032	146.32	312340005	146.32

Community Facilities District No. 1 (Park Maintenance) FY 2019/20 Tax Roll

APN	CFD No. 1 FY 2019/20 Applied Rate	APN	CFD No. 1 FY 2019/20 Applied Rate
291671033	146.32	312340006	146.32
291671034	146.32	312340007	146.32
291671035	146.32	312340008	146.32
291671036	146.32	312340009	146.32
291671037	146.32	312340010	146.32
291671038	146.32	312340011	146.32
291671039	146.32	312340013	146.32
291671040	146.32	312340014	146.32
291671042	146.32	312340015	146.32
291671043	146.32	312340016	146.32
291671044	146.32	312340017	146.32
291671045	146.32	312340018	146.32
291671046	146.32	312340019	146.32
291671047	146.32	312340020	146.32
291671048	146.32	312340021	146.32
291671049	146.32	312340022	146.32
291671050	146.32	312340023	146.32
291671051	146.32	312340024	146.32
291671052	146.32	312340025	146.32
291671053	146.32	312340026	146.32
292181001	146.32	312340027	146.32
292181002	146.32	312340028	146.32
292211001	5,413.84	312340029	146.32
304100002	25,752.32	312340030	146.32
304110015	146.32	312340031	146.32
304110016	146.32	312340032	146.32
304110017	146.32	312340033	146.32
304110018	146.32	312340034	146.32
304110019	146.32	312340035	146.32
304110020	146.32	312340036	146.32
304110021	146.32	312340037	146.32
304110022	146.32	312340038	146.32
304110023	146.32	312340039	146.32
304110024	146.32	312340040	146.32
304110025	146.32	312340041	146.32
304110026	146.32	312340042	146.32
304110027	146.32	312340043	146.32
304110028	146.32	312340044	146.32
304110029	146.32	312340045	146.32
304110030	146.32	312340046	146.32
304110031	146.32	312340047	146.32
304110032	146.32	312340048	146.32
304110033	146.32	312340049	146.32
304110034	146.32	312340050	146.32
304110035	146.32	312340051	146.32
304110036	146.32	312340052	146.32
304110037	146.32	312340053	146.32
304110038	146.32	312340054	146.32
304110039	146.32	312340055	146.32
304110040	146.32	312340056	146.32

Community Facilities District No. 1 (Park Maintenance) FY 2019/20 Tax Roll

APN	CFD No. 1 FY 2019/20 Applied Rate	APN	CFD No. 1 FY 2019/20 Applied Rate
304110041	146.32	312340057	146.32
304110042	146.32	312340058	146.32
304110043	146.32	312340059	146.32
304110044	146.32	312340060	146.32
304110045	146.32	312340061	146.32
304110046	146.32	312340062	146.32
304110047	146.32	312340063	146.32
304110048	146.32	312340064	146.32
304111001	146.32	312340065	146.32
304111002	146.32	312340066	146.32
304111003	146.32	312340067	146.32
304111004	146.32	312340068	146.32
304111005	146.32	312340069	146.32
304111006	146.32	312340070	146.32
304111007	146.32	312340071	146.32
304111008	146.32	312340072	146.32
304111009	146.32	312340074	146.32
304111010	146.32	312341001	146.32
304111011	146.32	312341002	146.32
304111012	146.32	312341003	146.32
304111013	146.32	312341004	146.32
304111014	146.32	312341005	146.32
304111015	146.32	312341006	146.32
304350027	146.32	312341007	146.32
304350028	146.32	312341008	146.32
304350029	146.32	312341009	146.32
304350030	146.32	312341010	146.32
304350031	146.32	312341011	146.32
304350032	146.32	312341012	146.32
304350033	146.32	312342001	146.32
304350034	146.32	312342002	146.32
304350035	146.32	312342003	146.32
304350036	146.32	312342004	146.32
304350037	146.32	312342005	146.32
304350038	146.32	312342006	146.32
304350039	146.32	312342007	146.32
304350040	146.32	312342008	146.32
304350041	146.32	312342009	146.32
304350042	146.32	312342010	146.32
304350043	146.32	312342011	146.32
304350044	146.32	312342012	146.32
304350045	146.32	312350001	146.32
304350046	146.32	312350002	146.32
304350047	146.32	312350003	146.32
304350048	146.32	312350004	146.32
304350049	146.32	312350005	146.32
304350050	146.32	312350006	146.32
304350051	146.32	312350007	146.32
304350052	146.32	312350008	146.32
304350053	146.32	312350009	146.32

Community Facilities District No. 1 (Park Maintenance) FY 2019/20 Tax Roll

APN	CFD No. 1 FY 2019/20 Applied Rate	APN	CFD No. 1 FY 2019/20 Applied Rate
304350054	146.32	312350010	146.32
304450001	146.32	312350011	146.32
304450002	146.32	312350012	146.32
304450003	146.32	312350013	146.32
304450004	146.32	312350014	146.32
304450005	146.32	312350015	146.32
304450006	146.32	312350016	146.32
304450007	146.32	312350017	146.32
304450008	146.32	312350018	146.32
304450009	146.32	312350019	146.32
304450010	146.32	312350020	146.32
304450011	146.32	312350021	146.32
304450012	146.32	312350022	146.32
304450013	146.32	312350023	146.32
304450014	146.32	312350024	146.32
304450015	146.32	312350025	146.32
304450016	146.32	312350026	146.32
304450017	146.32	312350027	146.32
304450018	146.32	312350028	146.32
304450019	146.32	312350029	146.32
304450020	146.32	312350030	146.32
304450021	146.32	312350031	146.32
304450022	146.32	312350032	146.32
304450023	146.32	312350033	146.32
304450024	146.32	312350034	146.32
304450025	146.32	312350035	146.32
304450026	146.32	312350036	146.32
304450027	146.32	312350037	146.32
304450028	146.32	312350038	146.32
304450029	146.32	312350039	146.32
304450030	146.32	312350040	146.32
304450031	146.32	312350041	146.32
304450032	146.32	312351001	146.32
304450033	146.32	312351002	146.32
304450034	146.32	312351003	146.32
304450035	146.32	312351004	146.32
304451001	146.32	312351005	146.32
304451002	146.32	312351006	146.32
304451003	146.32	312351007	146.32
304451004	146.32	312351008	146.32
304451005	146.32	312351009	146.32
304451006	146.32	312351010	146.32
304451007	146.32	312351011	146.32
304451008	146.32	312351012	146.32
304520001	146.32	312351013	146.32
304520002	146.32	312351014	146.32
304520003	146.32	312351015	146.32
304520004	146.32	312351017	146.32
304520005	146.32	312351018	146.32
304520006	146.32	312351019	146.32

Community Facilities District No. 1 (Park Maintenance) FY 2019/20 Tax Roll

APN	CFD No. 1 FY 2019/20 Applied Rate	APN	CFD No. 1 FY 2019/20 Applied Rate
304520007	146.32	312351020	146.32
304520008	146.32	312351021	146.32
304520009	146.32	312351022	146.32
304520010	146.32	312351023	146.32
304520011	146.32	312351024	146.32
304520012	146.32	312351025	146.32
304520013	146.32	312351026	146.32
304520014	146.32	312351027	146.32
304520015	146.32	312351028	146.32
304520016	146.32	312351032	146.32
304520017	146.32	312351033	146.32
304520018	146.32	312351034	146.32
304520019	146.32	312351035	146.32
304520020	146.32	312351036	146.32
304520021	146.32	312351037	146.32
304520022	146.32	312351038	146.32
304520023	146.32	312351039	146.32
304520024	146.32	312351041	146.32
304520025	146.32	312351042	146.32
304520026	146.32	312351043	146.32
304520027	146.32	312351044	146.32
304520028	146.32	312351045	146.32
304520029	146.32	312351046	146.32
304520030	146.32	312351052	146.32
304520031	146.32	312351053	146.32
304520032	146.32	312351054	146.32
304521001	146.32	316220001	146.32
304521002	146.32	316220002	146.32
304521003	146.32	316220003	146.32
304521004	146.32	316220004	146.32
304521005	146.32	316220005	146.32
304521006	146.32	316220006	146.32
304521007	146.32	316220007	146.32
304521008	146.32	316220008	146.32
304521009	146.32	316220009	146.32
304521010	146.32	316220010	146.32
304521011	146.32	316220011	146.32
304521012	146.32	316220012	146.32
304521013	146.32	316220013	146.32
304521014	146.32	316220014	146.32
304521015	146.32	316220015	146.32
304521016	146.32	316220016	146.32
304521017	146.32	316220017	146.32
304521018	146.32	316220018	146.32
304521019	146.32	316220019	146.32
304521020	146.32	316220020	146.32
304521021	146.32	316220021	146.32
304521022	146.32	316221001	146.32
304530001	146.32	316221002	146.32
304530002	146.32	316221003	146.32

Community Facilities District No. 1 (Park Maintenance) FY 2019/20 Tax Roll

APN	CFD No. 1 FY 2019/20 Applied Rate	APN	CFD No. 1 FY 2019/20 Applied Rate
304530003	146.32	316221004	146.32
304530004	146.32	316221005	146.32
304530005	146.32	316221006	146.32
304530006	146.32	316221007	146.32
304530007	146.32	316221008	146.32
304530008	146.32	316221009	146.32
304530009	146.32	316221010	146.32
304530010	146.32	316221011	146.32
304530011	146.32	316221012	146.32
304531001	146.32	316221013	146.32
304531002	146.32	316221014	146.32
304531003	146.32	316221015	146.32
304531004	146.32	316221016	146.32
304531005	146.32	316221017	146.32
304531006	146.32	316221018	146.32
304540001	146.32	316221019	146.32
304540002	146.32	316221020	146.32
304540003	146.32	316221021	146.32
304540004	146.32	316221022	146.32
304540005	146.32	316221023	146.32
304540006	146.32	316222001	146.32
304540007	146.32	316222002	146.32
304540008	146.32	316222003	146.32
304540009	146.32	316222004	146.32
304540010	146.32	316222005	146.32
304540011	146.32	316222006	146.32
304540012	146.32	316222007	146.32
304540013	146.32	316222008	146.32
304540014	146.32	316222009	146.32
304540015	146.32	471201008	27,800.80
304540016	146.32	471201011	3,365.36
304540017	146.32	473200004	146.32
304540018	146.32	473300002	2,633.76
304540019	146.32	473300009	1,902.16
304540021	146.32	474200014	4,096.96
304540022	146.32	474200025	11,266.64
304540023	146.32	474720010	146.32
304540024	146.32	474720011	146.32
304541001	146.32	474720012	146.32
304541002	146.32	474720013	146.32
304541003	146.32	474720014	146.32
304541004	146.32	474720015	146.32
304541005	146.32	474720016	146.32
304541006	146.32	474720017	146.32
304541007	146.32	474720018	146.32
304541008	146.32	474720019	146.32
304541010	146.32	474742006	146.32
304541011	146.32	474742007	146.32
304541012	146.32	474742008	146.32
304550001	146.32	474742009	146.32

Community Facilities District No. 1 (Park Maintenance) FY 2019/20 Tax Roll

APN	CFD No. 1 FY 2019/20 Applied Rate	APN	CFD No. 1 FY 2019/20 Applied Rate
304550002	146.32	474742010	146.32
304550003	146.32	474742011	146.32
304550004	146.32	474742012	146.32
304550005	146.32	474742013	146.32
304550006	146.32	474742014	146.32
304550007	146.32	474742015	146.32
304550008	146.32	474742016	146.32
304550009	146.32	474742017	146.32
304550010	146.32	474742018	146.32
304550011	146.32	474742019	146.32
304550012	146.32	474742020	146.32
304550013	146.32	474742021	146.32
304550014	146.32	474750001	146.32
304550015	146.32	474750002	146.32
304551001	146.32	474750003	146.32
304551002	146.32	475150055	146.32
304551003	146.32	475150056	146.32
304551004	146.32	475150057	146.32
304551005	146.32	475150058	146.32
304551006	146.32	475150059	146.32
304551007	146.32	478040032	146.32
304551008	146.32	478280023	146.32
304551009	146.32	478280024	146.32
304551010	146.32	478280025	146.32
304551011	146.32	478280026	146.32
304551012	146.32	478280027	146.32
304551013	146.32	478280028	146.32
304551014	146.32	478280029	146.32
304551015	146.32	478280030	146.32
304551016	146.32	478280031	146.32
304551017	146.32	478280032	146.32
304560001	146.32	478280033	146.32
304560002	146.32	478280034	146.32
304560003	146.32	478280035	146.32
304560004	146.32	478280036	146.32
304560005	146.32	478280041	146.32
304560006	146.32	478280042	146.32
304560007	146.32	478290019	146.32
304560008	146.32	478290020	146.32
304560009	146.32	478290021	146.32
304560010	146.32	478290022	146.32
304560011	146.32	478290023	146.32
304560012	146.32	478290024	146.32
304560013	146.32	478291001	146.32
304560014	146.32	478291002	146.32
304560015	146.32	478291003	146.32
304560016	146.32	478291004	146.32
304560017	146.32	478291011	146.32
304560018	146.32	478291012	146.32
304560019	146.32	478291013	146.32

Community Facilities District No. 1 (Park Maintenance) FY 2019/20 Tax Roll

APN	CFD No. 1 FY 2019/20 Applied Rate	APN	CFD No. 1 FY 2019/20 Applied Rate
304560020	146.32	478291014	146.32
304560021	146.32	478291015	146.32
304560022	146.32	478291016	146.32
304560023	146.32	478291017	146.32
304560024	146.32	478291018	146.32
304560025	146.32	478291019	146.32
304560026	146.32	478291020	146.32
304560027	146.32	478320001	146.32
304560028	146.32	478320002	146.32
304560029	146.32	478320003	146.32
304560030	146.32	478320004	146.32
304560031	146.32	478320005	146.32
304560032	146.32	478320006	146.32
304560033	146.32	478320007	146.32
304560034	146.32	478320008	146.32
304561001	146.32	478320009	146.32
304561002	146.32	478320010	146.32
304561003	146.32	478320011	146.32
304561004	146.32	478320012	146.32
304561005	146.32	478320013	146.32
304561006	146.32	478320014	146.32
304561007	146.32	478320015	146.32
304561008	146.32	478320016	146.32
304561009	146.32	478320017	146.32
304561010	146.32	478320018	146.32
304561011	146.32	478320019	146.32
304561012	146.32	478320020	146.32
304561013	146.32	478320021	146.32
304561014	146.32	478320022	146.32
304561015	146.32	478320023	146.32
304561016	146.32	478320024	146.32
304561017	146.32	478320025	146.32
308040052	18,290.00	478321001	146.32
308450001	146.32	478321002	146.32
308450002	146.32	478321003	146.32
308450003	146.32	478321004	146.32
308450004	146.32	478321005	146.32
308450005	146.32	478321006	146.32
308450006	146.32	478321007	146.32
308450007	146.32	478322001	146.32
308450008	146.32	478322002	146.32
308450009	146.32	478322003	146.32
308450010	146.32	478322004	146.32
308450011	146.32	478322005	146.32
308450012	146.32	478322006	146.32
308450013	146.32	478322007	146.32
308450014	146.32	478322008	146.32
308451001	146.32	478322009	146.32
308451002	146.32	478322010	146.32
308451003	146.32	478322011	146.32

Community Facilities District No. 1 (Park Maintenance) FY 2019/20 Tax Roll

APN	CFD No. 1 FY 2019/20 Applied Rate	APN	CFD No. 1 FY 2019/20 Applied Rate
308451004	146.32	478322012	146.32
308451005	146.32	478322013	146.32
308451006	146.32	478322014	146.32
308451007	146.32	478322015	146.32
308451008	146.32	478322016	146.32
308451009	146.32	478322017	146.32
308451010	146.32	478322018	146.32
308451011	146.32	478322019	146.32
308452001	146.32	478322020	146.32
308452002	146.32	478322021	146.32
308452003	146.32	478322022	146.32
308452004	146.32	478322023	146.32
308452005	146.32	478322024	146.32
308452006	146.32	478322025	146.32
308452007	146.32	478322026	146.32
308452008	146.32	478322027	146.32
308452009	146.32	478322028	146.32
308452010	146.32	478322029	146.32
308452011	146.32	478322030	146.32
308452012	146.32	478322031	146.32
308452013	146.32	478322032	146.32
308452014	146.32	478322033	146.32
308452015	146.32	478322034	146.32
308452016	146.32	478322035	146.32
308453001	146.32	478322036	146.32
308453002	146.32	478322037	146.32
308453003	146.32	478322038	146.32
308453004	146.32	478322039	146.32
308453005	146.32	478322040	146.32
308453006	146.32	478322041	146.32
308453007	146.32	478330001	146.32
308453008	146.32	478330002	146.32
308453009	146.32	478330003	146.32
308453010	146.32	478330004	146.32
308453011	146.32	478330005	146.32
308454001	146.32	478330006	146.32
308454002	146.32	478330007	146.32
308454003	146.32	478330008	146.32
308454004	146.32	478330009	146.32
308454005	146.32	478330010	146.32
308454006	146.32	478330011	146.32
308454007	146.32	478330012	146.32
308454008	146.32	478330013	146.32
308454009	146.32	478330014	146.32
308454010	146.32	478330015	146.32
308454011	146.32	478330016	146.32
308454012	146.32	478330017	146.32
308454013	146.32	478330018	146.32
308454014	146.32	478330019	146.32
308454015	146.32	478330020	146.32

Community Facilities District No. 1 (Park Maintenance) FY 2019/20 Tax Roll

APN	CFD No. 1 FY 2019/20 Applied Rate	APN	CFD No. 1 FY 2019/20 Applied Rate
308454016	146.32	478330021	146.32
308454017	146.32	478330022	146.32
308454018	146.32	478330023	146.32
308454019	146.32	478330024	146.32
308454020	146.32	478331001	146.32
308454021	146.32	478331002	146.32
308454022	146.32	478331003	146.32
308460001	146.32	478331004	146.32
308460002	146.32	478331005	146.32
308460003	146.32	478331006	146.32
308460004	146.32	478331007	146.32
308460005	146.32	478331008	146.32
308460006	146.32	478331009	146.32
308460007	146.32	478331010	146.32
308460008	146.32	478331011	146.32
308460009	146.32	478331012	146.32
308460010	146.32	478331013	146.32
308460011	146.32	478331014	146.32
308460012	146.32	478331015	146.32
308460013	146.32	478331016	146.32
308460014	146.32	478331017	146.32
308460015	146.32	478340001	146.32
308460016	146.32	478340002	146.32
308460017	146.32	478340003	146.32
308460018	146.32	478340004	146.32
308460019	146.32	478340005	146.32
308460020	146.32	478340006	146.32
308461001	146.32	478340007	146.32
308461002	146.32	478340008	146.32
308461003	146.32	478340009	146.32
308461004	146.32	478340010	146.32
308462001	146.32	478340011	146.32
308462002	146.32	478341001	146.32
308462003	146.32	478341002	146.32
308462004	146.32	478341003	146.32
308462005	146.32	478341004	146.32
308462006	146.32	478341005	146.32
308462007	146.32	478341006	146.32
308462008	146.32	478341007	146.32
308462009	146.32	478341008	146.32
308462010	146.32	478342001	146.32
308462011	146.32	478342002	146.32
308462012	146.32	478342003	146.32
308462013	146.32	478342004	146.32
308462014	146.32	478342005	146.32
308463001	146.32	478342006	146.32
308463002	146.32	478342007	146.32
308463003	146.32	478342008	146.32
308463004	146.32	478342009	146.32
308463005	146.32	478342010	146.32

Community Facilities District No. 1 (Park Maintenance) FY 2019/20 Tax Roll

APN	CFD No. 1 FY 2019/20 Applied Rate	APN	CFD No. 1 FY 2019/20 Applied Rate
308463006	146.32	478342011	146.32
308463007	146.32	478342012	146.32
308463008	146.32	478342013	146.32
308463009	146.32	478342014	146.32
308463010	146.32	478342015	146.32
308463011	146.32	478342016	146.32
308463012	146.32	478342017	146.32
308463013	146.32	478342018	146.32
308463014	146.32	478342019	146.32
308463015	146.32	478342020	146.32
308463016	146.32	478342021	146.32
308463017	146.32	478342022	146.32
308463018	146.32	478350001	146.32
308463019	146.32	478350002	146.32
308463020	146.32	478350003	146.32
308463021	146.32	478350004	146.32
308463022	146.32	478351014	146.32
308463023	146.32	478351015	146.32
308463024	146.32	478351016	146.32
308463025	146.32	478351017	146.32
308463026	146.32	478351018	146.32
308463027	146.32	478351019	146.32
308463028	146.32	478351020	146.32
308463029	146.32	478351021	146.32
308470001	146.32	478351022	146.32
308470002	146.32	478351023	146.32
308470003	146.32	478351024	146.32
308470004	146.32	478351025	146.32
308470005	146.32	478351027	146.32
308470006	146.32	478351028	146.32
308470007	146.32	478351029	146.32
308470008	146.32	478351030	146.32
308470009	146.32	478351031	146.32
308470010	146.32	478351032	146.32
308470011	146.32	478352001	146.32
308470012	146.32	478352002	146.32
308470013	146.32	478352003	146.32
308470014	146.32	478352004	146.32
308470015	146.32	478352005	146.32
308470016	146.32	478352006	146.32
308470017	146.32	478352007	146.32
308470018	146.32	478352008	146.32
308470019	146.32	478360001	146.32
308470020	146.32	478360002	146.32
308470021	146.32	478360003	146.32
308470022	146.32	478360004	146.32
308470023	146.32	478360005	146.32
308470024	146.32	478360006	146.32
308470025	146.32	478360007	146.32
308470026	146.32	478360008	146.32

Community Facilities District No. 1 (Park Maintenance) FY 2019/20 Tax Roll

APN	CFD No. 1 FY 2019/20 Applied Rate	APN	CFD No. 1 FY 2019/20 Applied Rate
308470027	146.32	478360009	146.32
308470028	146.32	478360010	146.32
308470029	146.32	478360011	146.32
308470030	146.32	478360012	146.32
308470031	146.32	478360013	146.32
308470032	146.32	478360014	146.32
308470033	146.32	478360015	146.32
308470034	146.32	478360016	146.32
308470035	146.32	478360017	146.32
308470036	146.32	478360018	146.32
308470037	146.32	478360019	146.32
308470038	146.32	478360020	146.32
308470039	146.32	478360021	146.32
308470040	146.32	478360022	146.32
308470041	146.32	478360023	146.32
308470042	146.32	478360024	146.32
308470043	146.32	478360025	146.32
308470044	146.32	478360026	146.32
308470045	146.32	478360027	146.32
308470046	146.32	478360028	146.32
308470047	146.32	478360029	146.32
308470048	146.32	478360030	146.32
308480001	146.32	478360031	146.32
308480002	146.32	478360032	146.32
308480003	146.32	478360033	146.32
308480004	146.32	478360034	146.32
308480005	146.32	478361002	146.32
308480006	146.32	478361003	146.32
308480007	146.32	478361004	146.32
308480008	146.32	478370001	146.32
308480009	146.32	478370002	146.32
308480010	146.32	478370003	146.32
308480011	146.32	478370004	146.32
308480013	146.32	478370005	146.32
308480014	146.32	478370006	146.32
308480015	146.32	478370007	146.32
308480016	146.32	478370008	146.32
308480017	146.32	478370009	146.32
308480018	146.32	478370010	146.32
308480021	146.32	478370011	146.32
308480022	146.32	478370012	146.32
308480023	146.32	478370013	146.32
308480024	146.32	478371001	146.32
308481001	146.32	478371002	146.32
308481002	146.32	478371003	146.32
308481003	146.32	478371004	146.32
308481004	146.32	478371005	146.32
308481005	146.32	478371006	146.32
308481006	146.32	478371007	146.32
308481007	146.32	478371008	146.32

Community Facilities District No. 1 (Park Maintenance) FY 2019/20 Tax Roll

APN	CFD No. 1 FY 2019/20 Applied Rate	APN	CFD No. 1 FY 2019/20 Applied Rate
308481008	146.32	478371009	146.32
308481009	146.32	478371010	146.32
308481010	146.32	478371011	146.32
308481011	146.32	478371012	146.32
308481012	146.32	478371013	146.32
308481013	146.32	478371014	146.32
308490001	146.32	478371015	146.32
308490002	146.32	478371016	146.32
308490003	146.32	478371017	146.32
308490004	146.32	478371018	146.32
308490006	146.32	478371019	146.32
308490007	146.32	478371020	146.32
308490008	146.32	478380001	146.32
308490009	146.32	478380002	146.32
308490010	146.32	478380003	146.32
308490011	146.32	478380004	146.32
308490014	146.32	478380005	146.32
308490015	146.32	478380006	146.32
308490016	146.32	478381001	146.32
308490017	146.32	478381002	146.32
308490022	146.32	478381003	146.32
308490024	146.32	478381004	146.32
308490025	146.32	478381005	146.32
308491001	146.32	478381006	146.32
308491002	146.32	478381007	146.32
308491003	146.32	478381008	146.32
308491004	146.32	478381009	146.32
308491005	146.32	478381010	146.32
308491006	146.32	478381011	146.32
308491007	146.32	478381012	146.32
308491008	146.32	478381013	146.32
308491009	146.32	478381014	146.32
308491010	146.32	478381015	146.32
308491011	146.32	478381016	146.32
308491012	146.32	478381017	146.32
308491013	146.32	478381018	146.32
308491014	146.32	478381019	146.32
308491015	146.32	478381020	146.32
308491016	146.32	478381021	146.32
308491017	146.32	478381022	146.32
308491018	146.32	478381023	146.32
308491019	146.32	478381024	146.32
308491020	146.32	478381025	146.32
308491021	146.32	478381026	146.32
308491022	146.32	478382001	146.32
308491023	146.32	478382002	146.32
308500001	146.32	478382003	146.32
308500002	146.32	478382004	146.32
308500003	146.32	478390001	146.32
308500004	146.32	478390002	146.32

Community Facilities District No. 1 (Park Maintenance) FY 2019/20 Tax Roll

APN	CFD No. 1 FY 2019/20 Applied Rate	APN	CFD No. 1 FY 2019/20 Applied Rate
308500005	146.32	478390003	146.32
308500006	146.32	478390004	146.32
308500007	146.32	478390005	146.32
308500008	146.32	478390006	146.32
308501001	146.32	478391001	146.32
308501002	146.32	478391002	146.32
308501003	146.32	478391003	146.32
308501004	146.32	478391004	146.32
308501005	146.32	478391005	146.32
308501006	146.32	478391006	146.32
308502001	146.32	478391007	146.32
308502002	146.32	478391008	146.32
308502003	146.32	478391009	146.32
308502004	146.32	478391010	146.32
308502005	146.32	478391011	146.32
308502006	146.32	478391012	146.32
308502007	146.32	478392001	146.32
308502008	146.32	478392002	146.32
308502009	146.32	478392003	146.32
308502010	146.32	478392004	146.32
308502011	146.32	478392005	146.32
308502012	146.32	478392006	146.32
308502013	146.32	478392007	146.32
308502014	146.32	478392008	146.32
308502015	146.32	478393001	146.32
308502016	146.32	478393002	146.32
308502017	146.32	478393003	146.32
308502018	146.32	478393004	146.32
308502019	146.32	478393005	146.32
308502020	146.32	478393006	146.32
308502021	146.32	478393007	146.32
308502022	146.32	478393008	146.32
308502023	146.32	478393009	146.32
308502024	146.32	478393010	146.32
308502025	146.32	478393011	146.32
308502026	146.32	478393012	146.32
308502027	146.32	478440001	146.32
308502028	146.32	478440002	146.32
308502029	146.32	478440003	146.32
308502030	146.32	478440004	146.32
308510001	146.32	478440005	146.32
308510002	146.32	478440006	146.32
308510003	146.32	478440007	146.32
308510004	146.32	478440008	146.32
308510005	146.32	478440009	146.32
308510006	146.32	478440010	146.32
308510007	146.32	479690001	146.32
308510008	146.32	481250045	146.32
308510009	146.32	481250046	146.32
308510010	146.32	481250047	146.32

Community Facilities District No. 1 (Park Maintenance) FY 2019/20 Tax Roll

APN	CFD No. 1 FY 2019/20 Applied Rate	APN	CFD No. 1 FY 2019/20 Applied Rate
308510011	146.32	481250048	146.32
308510012	146.32	481250049	146.32
308511001	146.32	481250050	146.32
308511002	146.32	481250051	146.32
308511003	146.32	481250052	146.32
308511004	146.32	481281064	7,608.64
308511005	146.32	481322051	3,804.32
308511006	146.32	484020023	17,558.40
308511007	146.32	484020024	29,264.00
308511008	146.32	484201027	146.32
308511009	146.32	484201028	146.32
308511010	146.32	484201029	146.32
308511011	146.32	484201030	146.32
308511012	146.32	484201031	146.32
308511013	146.32	484201032	146.32
308511014	146.32	484201033	146.32
308511015	146.32	484201034	146.32
308511016	146.32	484201035	146.32
308511017	146.32	484201036	146.32
308511018	146.32	484201037	146.32
308511019	146.32	484201038	146.32
308511020	146.32	484201039	146.32
308511021	146.32	484201040	146.32
308511022	146.32	484201041	146.32
308511023	146.32	484201042	146.32
308511024	146.32	484201043	146.32
308511025	146.32	484201044	146.32
308512001	146.32	484201045	146.32
308512002	146.32	484201046	146.32
308512003	146.32	484201047	146.32
308512004	146.32	484201048	146.32
308512005	146.32	484201049	146.32
308513001	146.32	484201050	146.32
308513002	146.32	484201051	146.32
308513003	146.32	484201052	146.32
308513004	146.32	484201053	146.32
308513005	146.32	484201054	146.32
308513006	146.32	484203001	146.32
308513007	146.32	484203002	146.32
308513008	146.32	484203003	146.32
308513009	146.32	484203004	146.32
308513010	146.32	484203005	146.32
308513011	146.32	484203006	146.32
308520001	146.32	484203007	146.32
308520002	146.32	484203008	146.32
308520003	146.32	486070004	17,704.72
308520004	146.32	486070012	10,388.72
308520005	146.32	486070013	11,559.28
308520006	146.32	486070016	17,558.40
308520007	146.32	486340032	39,213.76

Community Facilities District No. 1 (Park Maintenance) FY 2019/20 Tax Roll

APN	CFD No. 1 FY 2019/20 Applied Rate	APN	CFD No. 1 FY 2019/20 Applied Rate
308520008	146.32	486340035	5,267.52
308520009	146.32	486480027	146.32
308520010	146.32	486480028	146.32
308520011	146.32	486480029	146.32
308520012	146.32	486480030	146.32
308520013	146.32	486480031	146.32
308520014	146.32	486480032	146.32
308520015	146.32	486480033	146.32
308520017	146.32	486480034	146.32
308520018	146.32	486480035	146.32
308520019	146.32	486480036	146.32
308520020	146.32	486480037	146.32
308520021	146.32	486480038	146.32
308520022	146.32	486480039	146.32
308520023	146.32	486480040	146.32
308520024	146.32	486480041	146.32
308520025	146.32	486480042	146.32
308520026	146.32	486480043	146.32
308520027	146.32	486480044	146.32
308520028	146.32	486480045	146.32
308520029	146.32	486480046	146.32
308520030	146.32	486490001	146.32
308520031	146.32	486490002	146.32
308520032	146.32	486490003	146.32
308520033	146.32	486490004	146.32
308520034	146.32	486490005	146.32
308520035	146.32	486490006	146.32
308520036	146.32	486490007	146.32
308520037	146.32	486490008	146.32
308520038	146.32	486490009	146.32
308520039	146.32	486490010	146.32
308520040	146.32	486490011	146.32
308520041	146.32	486490012	146.32
308520042	146.32	486490013	146.32
308520043	146.32	486490014	146.32
308521001	146.32	486490015	146.32
308521002	146.32	486490016	146.32
308521003	146.32	486490017	146.32
308521004	146.32	486490018	146.32
308521005	146.32	486490019	146.32
308521006	146.32	486490020	146.32
308521007	146.32	486490021	146.32
308521008	146.32	486490022	146.32
308522001	146.32	486490023	146.32
308522002	146.32	486490024	146.32
308522003	146.32	486490025	146.32
308522004	146.32	486490026	146.32
308522005	146.32	486490027	146.32
308522006	146.32	486490028	146.32
308522007	146.32	486490029	146.32

Community Facilities District No. 1 (Park Maintenance) FY 2019/20 Tax Roll

APN	CFD No. 1 FY 2019/20 Applied Rate	APN	CFD No. 1 FY 2019/20 Applied Rate
308522008	146.32	486490030	146.32
308522009	146.32	486490031	146.32
308522010	146.32	486490032	146.32
308522011	146.32	486491001	146.32
308522012	146.32	486491002	146.32
308522013	146.32	486491003	146.32
308522014	146.32	486491004	146.32
308522015	146.32	486491005	146.32
308522016	146.32	486491006	146.32
308522017	146.32	486491007	146.32
308522018	146.32	486491008	146.32
308522019	146.32	486492001	146.32
308522020	146.32	486492002	146.32
308522021	146.32	486492003	146.32
308522022	146.32	486492004	146.32
308522023	146.32	486492005	146.32
308522024	146.32	486492006	146.32
308522025	146.32	486492007	146.32
308522026	146.32	486492008	146.32
308522027	146.32	486492009	146.32
308522028	146.32	486492010	146.32
308522029	146.32	486492011	146.32
308522030	146.32	486492012	146.32
308530001	146.32	486492013	146.32
308530002	146.32	486492014	146.32
308530003	146.32	486492015	146.32
308530004	146.32	486492016	146.32
308530005	146.32	486492017	146.32
308530006	146.32	486492018	146.32
308530007	146.32	486492019	146.32
308530008	146.32	486492020	146.32
308530009	146.32	486492021	146.32
308530010	146.32	486492022	146.32
308530011	146.32	486492023	146.32
308530012	146.32	486492024	146.32
308530013	146.32	486492025	146.32
308530014	146.32	486492026	146.32
308530015	146.32	486492027	146.32
308530016	146.32	486492028	146.32
308530017	146.32	486492029	146.32
308530018	146.32	486492030	146.32
308530019	146.32	486493001	146.32
308530020	146.32	486493002	146.32
308530021	146.32	486493003	146.32
308530022	146.32	486493004	146.32
308530023	146.32	486493005	146.32
308530024	146.32	486500001	146.32
308530025	146.32	486500002	146.32
308531001	146.32	486500003	146.32
308531002	146.32		

Community Facilities District No. 1 (Park Maintenance) FY 2019/20 Tax Roll

APN	CFD No. 1 FY 2019/20 Applied Rate	APN	CFD No. 1 FY 2019/20 Applied Rate
308531003	146.32	486500004	146.32
308531004	146.32	486500005	146.32
308531005	146.32	486500006	146.32
308531006	146.32	486500007	146.32
308531007	146.32	486500008	146.32
308531008	146.32	486501001	146.32
308531009	146.32	486501002	146.32
308531010	146.32	486501003	146.32
308531011	146.32	486501004	146.32
308531012	146.32	486501005	146.32
308531013	146.32	486501006	146.32
308531014	146.32	486502001	146.32
308531015	146.32	486502002	146.32
308531016	146.32	486502003	146.32
308531017	146.32	486503001	146.32
308531018	146.32	486503002	146.32
308531019	146.32	486503003	146.32
308531020	146.32	486503004	146.32
308531021	146.32	486503005	146.32
308531022	146.32	486503006	146.32
308531023	146.32	486503007	146.32
308531024	146.32	486503008	146.32
308531025	146.32	486503009	146.32
308531026	146.32	486503010	146.32
308531027	146.32	486503011	146.32
308531028	146.32	486503012	146.32
308531029	146.32	486503013	146.32
308531030	146.32	486503014	146.32
308531031	146.32	486503015	146.32
308531032	146.32	486503016	146.32
308531033	146.32	486503017	146.32
308531034	146.32	486503018	146.32
308531035	146.32	486503019	146.32
308531036	146.32	486503020	146.32
308531037	146.32	486503021	146.32
308531038	146.32	486503022	146.32
308531039	146.32	486503023	146.32
308531040	146.32	486503024	146.32
308531041	146.32	486503025	146.32
308531042	146.32	486503026	146.32
308531043	146.32	486504001	146.32
308531044	146.32	486504002	146.32
308531045	146.32	486504003	146.32
308531046	146.32	486504004	146.32
308531047	146.32	486504005	146.32
308531048	146.32	486504006	146.32
308531049	146.32	486504007	146.32
308531050	146.32	486504008	146.32
308531051	146.32	486504009	146.32
308531052	146.32	486504010	146.32

Community Facilities District No. 1 (Park Maintenance) FY 2019/20 Tax Roll

APN	CFD No. 1 FY 2019/20 Applied Rate	APN	CFD No. 1 FY 2019/20 Applied Rate
308531053	146.32	486504011	146.32
308531054	146.32	486504012	146.32
308531055	146.32	486504013	146.32
308531056	146.32	486504014	146.32
308531057	146.32	486504015	146.32
308531058	146.32	486504016	146.32
308540001	146.32	486504017	146.32
308540002	146.32	486504018	146.32
308540003	146.32	486504019	146.32
308540004	146.32	486505001	146.32
308540005	146.32	486505002	146.32
308540006	146.32	486505003	146.32
308540007	146.32	486505004	146.32
308540008	146.32	486505005	146.32
308540009	146.32	486505006	146.32
308540010	146.32	486505007	146.32
308540011	146.32	486505008	146.32
308540012	146.32	486505009	146.32
308540013	146.32	486505010	146.32
308540014	146.32	486505011	146.32
308540015	146.32	486505012	146.32
308540016	146.32	486505013	146.32
308540017	146.32	486510001	146.32
308540018	146.32	486510002	146.32
308540019	146.32	486510003	146.32
308540020	146.32	486510004	146.32
308540021	146.32	486510005	146.32
308540022	146.32	486510006	146.32
308540023	146.32	486510007	146.32
308540024	146.32	486510008	146.32
308540025	146.32	486510009	146.32
308540026	146.32	486510010	146.32
308540027	146.32	486510011	146.32
308540028	146.32	486510012	146.32
308540029	146.32	486510013	146.32
308540030	146.32	486510014	146.32
308540031	146.32	486510015	146.32
308540032	146.32	486510016	146.32
308540033	146.32	486510017	146.32
308540034	146.32	486510018	146.32
308540035	146.32	486510019	146.32
308540036	146.32	486510020	146.32
308540037	146.32	486510021	146.32
308540038	146.32	486510022	146.32
308540039	146.32	486511001	146.32
308540040	146.32	486511002	146.32
308540041	146.32	486511003	146.32
308540042	146.32	486511004	146.32
308540043	146.32	486511005	146.32
308540044	146.32	486511006	146.32

Community Facilities District No. 1 (Park Maintenance) FY 2019/20 Tax Roll

APN	CFD No. 1 FY 2019/20 Applied Rate	APN	CFD No. 1 FY 2019/20 Applied Rate
308540045	146.32	486511007	146.32
308540046	146.32	486511008	146.32
308540047	146.32	486511009	146.32
308540048	146.32	486511010	146.32
308541001	146.32	486511011	146.32
308541002	146.32	486511012	146.32
308541003	146.32	486511013	146.32
308541004	146.32	486512001	146.32
308541005	146.32	486512002	146.32
308541006	146.32	486512003	146.32
308541007	146.32	486512004	146.32
308541008	146.32	486512005	146.32
308541009	146.32	486512006	146.32
308541010	146.32	486512007	146.32
308541011	146.32	486512008	146.32
308541012	146.32	486512009	146.32
308541013	146.32	486512010	146.32
308541014	146.32	486512011	146.32
308541015	146.32	486512012	146.32
308541016	146.32	486512013	146.32
308541017	146.32	486512014	146.32
308541018	146.32	486512015	146.32
308550001	146.32	486512016	146.32
308550002	146.32	486512017	146.32
308550003	146.32	486512018	146.32
308550004	146.32	486513001	146.32
308550005	146.32	486513002	146.32
308550006	146.32	486513003	146.32
308551001	146.32	486513004	146.32
308551002	146.32	486513005	146.32
308551003	146.32	486513006	146.32
308551004	146.32	486513007	146.32
308551005	146.32	486513008	146.32
308551006	146.32	486513009	146.32
308551007	146.32	486520001	146.32
308551008	146.32	486520002	146.32
308551009	146.32	486520003	146.32
308552001	146.32	486520004	146.32
308552002	146.32	486520005	146.32
308552003	146.32	486520006	146.32
308552004	146.32	486520007	146.32
308552005	146.32	486520008	146.32
308552006	146.32	486521001	146.32
308552007	146.32	486521002	146.32
308552008	146.32	486521003	146.32
308552009	146.32	486521004	146.32
308552010	146.32	486521005	146.32
308552011	146.32	486522001	146.32
308552012	146.32	486522002	146.32
308552013	146.32	486522003	146.32

Community Facilities District No. 1 (Park Maintenance) FY 2019/20 Tax Roll

APN	CFD No. 1 FY 2019/20 Applied Rate	APN	CFD No. 1 FY 2019/20 Applied Rate
308552014	146.32	486522004	146.32
308552015	146.32	486522005	146.32
308552016	146.32	486522006	146.32
308552017	146.32	486522007	146.32
308560001	146.32	486522008	146.32
308560002	146.32	486522009	146.32
308560003	146.32	486522010	146.32
308560004	146.32	486522011	146.32
308560005	146.32	486523001	146.32
308560006	146.32	486523002	146.32
308560007	146.32	486523003	146.32
308560008	146.32	486523004	146.32
308560009	146.32	486523005	146.32
308560010	146.32	486523006	146.32
308560011	146.32	486523007	146.32
308560012	146.32	486523008	146.32
308560013	146.32	486523009	146.32
308560014	146.32	486523010	146.32
308560015	146.32	486523011	146.32
308560016	146.32	486523012	146.32
308560017	146.32	486523013	146.32
308560018	146.32	486523014	146.32
308560019	146.32	486523015	146.32
308560023	146.32	486523016	146.32
308560024	146.32	486523017	146.32
308560025	146.32	486523018	146.32
308560026	146.32	486523019	146.32
308560027	146.32	486523020	146.32
308560028	146.32	486523021	146.32
308560029	146.32	486523022	146.32
308561001	146.32	486523023	146.32
308561002	146.32	486523024	146.32
308561003	146.32	486523025	146.32
308561004	146.32	486531001	146.32
308561005	146.32	486531002	146.32
308561006	146.32	486531003	146.32
308561007	146.32	486531004	146.32
308561008	146.32	486531005	146.32
308561009	146.32	486531006	146.32
308570001	146.32	486531008	146.32
308570002	146.32	486531009	146.32
308570003	146.32	486531010	146.32
308570004	146.32	486531011	146.32
308570005	146.32	486531012	146.32
308570006	146.32	486531013	146.32
308570007	146.32	486531015	146.32
308570008	146.32	486531016	146.32
308570009	146.32	486531017	146.32
308570010	146.32	486531018	146.32
308570011	146.32	486531019	146.32

Community Facilities District No. 1 (Park Maintenance) FY 2019/20 Tax Roll

APN	CFD No. 1 FY 2019/20 Applied Rate	APN	CFD No. 1 FY 2019/20 Applied Rate
308570012	146.32	486531020	146.32
308570013	146.32	486531021	146.32
308570014	146.32	486531022	146.32
308570015	146.32	486531023	146.32
308570016	146.32	486531025	146.32
308570017	146.32	486531026	146.32
308570018	146.32	486531027	146.32
308571001	146.32	486531028	146.32
308571002	146.32	486531029	146.32
308571003	146.32	486531030	146.32
308571004	146.32	486531031	146.32
308571005	146.32	486531032	146.32
308571006	146.32	486531033	146.32
308571007	146.32	486531034	146.32
308571008	146.32	486531035	146.32
308571009	146.32	486531036	146.32
308571010	146.32	486531037	146.32
308571011	146.32	486531038	146.32
308571012	146.32	486531039	146.32
308571013	146.32	486531041	146.32
308571014	146.32	486531042	146.32
308571015	146.32	486531043	146.32
308571016	146.32	486531044	146.32
308571017	146.32	486531045	146.32
308571018	146.32	486531046	146.32
308571019	146.32	486531047	146.32
308571020	146.32	486531048	146.32
308571021	146.32	486531049	146.32
308571022	146.32	486531051	146.32
308571023	146.32	486531052	146.32
308571024	146.32	486531053	146.32
308571025	146.32	486531054	146.32
308571026	146.32	486531055	146.32
308571027	146.32	486531056	146.32
308571028	146.32	486531057	146.32
308572001	146.32	486531058	146.32
308572002	146.32	486531059	146.32
308572003	146.32	486531061	146.32
308572004	146.32	486531062	146.32
308572005	146.32	486531063	146.32
308572006	146.32	486531064	146.32
308572007	146.32	486531065	146.32
308572008	146.32	486531066	146.32
308572009	146.32	486531068	146.32
308572010	146.32	486531069	146.32
308572011	146.32	486531070	146.32
308572012	146.32	486531071	146.32
308572013	146.32	486531072	146.32
308572014	146.32	486531073	146.32
308572015	146.32	486531074	146.32

Community Facilities District No. 1 (Park Maintenance) FY 2019/20 Tax Roll

APN	CFD No. 1 FY 2019/20 Applied Rate	APN	CFD No. 1 FY 2019/20 Applied Rate
308572016	146.32	486531075	146.32
308572017	146.32	486531076	146.32
308572018	146.32	486531078	146.32
308572019	146.32	486531079	146.32
308572020	146.32	486531080	146.32
308572021	146.32	486531081	146.32
308572022	146.32	486531082	146.32
308572023	146.32	486531083	146.32
308572024	146.32	486531085	146.32
308572025	146.32	486531086	146.32
308572026	146.32	486531087	146.32
308572027	146.32	486531088	146.32
308573001	146.32	486531089	146.32
308573002	146.32	486531090	146.32
308573003	146.32	486532001	146.32
308573004	146.32	486532002	146.32
308573005	146.32	486532003	146.32
308573006	146.32	486532004	146.32
308573007	146.32	486532005	146.32
308573008	146.32	486532006	146.32
308573009	146.32	486532008	146.32
308573010	146.32	486532009	146.32
308573011	146.32	486532010	146.32
308573012	146.32	486532011	146.32
308573013	146.32	486532012	146.32
308573014	146.32	486532013	146.32
308573015	146.32	486532015	146.32
308573016	146.32	486532016	146.32
308580001	146.32	486532017	146.32
308580002	146.32	486532018	146.32
308580003	146.32	486532019	146.32
308580004	146.32	486532020	146.32
308580005	146.32	486532022	146.32
308580006	146.32	486532023	146.32
308580007	146.32	486532024	146.32
308580008	146.32	486532025	146.32
308580009	146.32	486532026	146.32
308580010	146.32	486532027	146.32
308580011	146.32	486532029	146.32
308580012	146.32	486532030	146.32
308580013	146.32	486532031	146.32
308581001	146.32	486532032	146.32
308581002	146.32	486532033	146.32
308581003	146.32	486532034	146.32
308581004	146.32	486532036	146.32
308581005	146.32	486532037	146.32
308581006	146.32	486532038	146.32
308581007	146.32	486532040	146.32
308581008	146.32	486532041	146.32
308581009	146.32	486532042	146.32

Community Facilities District No. 1 (Park Maintenance) FY 2019/20 Tax Roll

APN	CFD No. 1 FY 2019/20 Applied Rate	APN	CFD No. 1 FY 2019/20 Applied Rate
308581010	146.32	486532043	146.32
308581011	146.32	486532044	146.32
308581012	146.32	486532045	146.32
308581013	146.32	486532047	146.32
308581014	146.32	486532048	146.32
308581015	146.32	486532049	146.32
308581016	146.32	486532050	146.32
308581017	146.32	486532051	146.32
308581018	146.32	486532052	146.32
308581019	146.32	486532054	146.32
308581020	146.32	486532055	146.32
308581021	146.32	486532056	146.32
308581022	146.32	486532058	146.32
308581023	146.32	486532059	146.32
308581024	146.32	486532060	146.32
308582001	146.32	486532061	146.32
308582002	146.32	486532062	146.32
308582003	146.32	486532063	146.32
308582004	146.32	486532065	146.32
308582005	146.32	486532066	146.32
308582006	146.32	486532067	146.32
308582007	146.32	486532068	146.32
308582008	146.32	486532069	146.32
308582009	146.32	486532070	146.32
308582010	146.32	486532072	146.32
308582011	146.32	486532073	146.32
308582012	146.32	486532074	146.32
308582013	146.32	486532075	146.32
308582014	146.32	486532076	146.32
308582015	146.32	486532077	146.32
308582016	146.32	486532079	146.32
308582017	146.32	486532080	146.32
308582018	146.32	486532081	146.32
308582019	146.32	486532082	146.32
308582020	146.32	486532083	146.32
308582021	146.32	486532084	146.32
308582022	146.32	486532086	146.32
308582023	146.32	486532087	146.32
308582024	146.32	486532088	146.32
308582025	146.32	486532090	146.32
308582026	146.32	486532091	146.32
308582027	146.32	486532092	146.32
308582028	146.32	486532093	146.32
308582029	146.32	486532094	146.32
308582030	146.32	486532095	146.32
308582031	146.32	486532096	146.32
308582032	146.32	486532097	146.32
308582033	146.32	486532098	146.32
308582034	146.32	486540001	146.32
308582035	146.32	486540002	146.32

Community Facilities District No. 1 (Park Maintenance) FY 2019/20 Tax Roll

APN	CFD No. 1 FY 2019/20 Applied Rate	APN	CFD No. 1 FY 2019/20 Applied Rate
308582036	146.32	486540003	146.32
308582037	146.32	486540004	146.32
308582038	146.32	486540005	146.32
308582039	146.32	486540006	146.32
308582040	146.32	486540007	146.32
308582041	146.32	486540008	146.32
308582042	146.32	486540009	146.32
308582043	146.32	486541001	146.32
308582044	146.32	486541002	146.32
308582045	146.32	486541003	146.32
308582046	146.32	486541004	146.32
308582047	146.32	486541005	146.32
308582048	146.32	486541006	146.32
308582049	146.32	486541007	146.32
308582050	146.32	486541008	146.32
308582051	146.32	486541009	146.32
308582052	146.32	486541010	146.32
308582053	146.32	486541011	146.32
308582054	146.32	486541012	146.32
308582055	146.32	486541013	146.32
308590001	146.32	486541014	146.32
308590002	146.32	486541015	146.32
308590003	146.32	486541016	146.32
308590004	146.32	486541017	146.32
308590005	146.32	486541018	146.32
308590006	146.32	486541019	146.32
308590007	146.32	486542001	146.32
308590008	146.32	486542002	146.32
308590009	146.32	486542003	146.32
308590010	146.32	486542004	146.32
308590011	146.32	486542005	146.32
308590012	146.32	486542006	146.32
308590013	146.32	486542007	146.32
308590014	146.32	486542008	146.32
308590015	146.32	486542009	146.32
308591001	146.32	486542010	146.32
308591002	146.32	486542011	146.32
308591003	146.32	486542012	146.32
308591004	146.32	486550001	146.32
308591005	146.32	486550002	146.32
308591006	146.32	486550012	146.32
308591007	146.32	486550013	146.32
308592001	146.32	486550014	146.32
308592002	146.32	486550015	146.32
308592003	146.32	486550016	146.32
308592004	146.32	486550017	146.32
308592005	146.32	486551001	146.32
308592006	146.32	486551002	146.32
308592007	146.32	486551003	146.32
308592008	146.32	486551004	146.32

Community Facilities District No. 1 (Park Maintenance) FY 2019/20 Tax Roll

APN	CFD No. 1 FY 2019/20 Applied Rate	APN	CFD No. 1 FY 2019/20 Applied Rate
308592009	146.32	486551005	146.32
308592010	146.32	486551006	146.32
308592011	146.32	486551007	146.32
308592012	146.32	486551008	146.32
308592013	146.32	486551009	146.32
308592014	146.32	486551010	146.32
308592015	146.32	486551011	146.32
308592016	146.32	486551012	146.32
308592017	146.32	486552001	146.32
308592018	146.32	486552002	146.32
308592019	146.32	486552003	146.32
308600001	146.32	486552004	146.32
308600002	146.32	486552005	146.32
308600003	146.32	486552006	146.32
308600004	146.32	486552007	146.32
308601001	146.32	486552008	146.32
308601002	146.32	486552009	146.32
308601003	146.32	486552010	146.32
308601004	146.32	486552011	146.32
308601005	146.32	486552012	146.32
308601006	146.32	486552013	146.32
308601007	146.32	486552014	146.32
308601008	146.32	486552015	146.32
308601009	146.32	486552016	146.32
308601010	146.32	486552017	146.32
308601011	146.32	486552018	146.32
308601012	146.32	486552019	146.32
308601013	146.32	486552020	146.32
308601014	146.32	486552021	146.32
308601015	146.32	486552022	146.32
308601016	146.32	486552023	146.32
308601017	146.32	486552024	146.32
308601018	146.32	486552025	146.32
308601019	146.32	486552026	146.32
308601020	146.32	486552027	146.32
308601021	146.32	486552028	146.32
308610009	1,755.84	486552029	146.32
308610011	1,755.84	486552030	146.32
308610012	1,755.84	486552031	146.32
308610013	3,511.68	486552032	146.32
308610014	1,170.56	486552033	146.32
308610015	1,170.56	486552034	146.32
308610036	877.92	486552035	146.32
308610039	1,170.56	486553001	146.32
308610041	1,755.84	486553002	146.32
308611001	146.32	486553003	146.32
308611002	146.32	486553004	146.32
308611003	146.32	486553005	146.32
308611004	146.32	486553006	146.32
308611005	146.32	486553007	146.32

Community Facilities District No. 1 (Park Maintenance) FY 2019/20 Tax Roll

APN	CFD No. 1 FY 2019/20 Applied Rate	APN	CFD No. 1 FY 2019/20 Applied Rate
308611006	146.32	486553008	146.32
308611007	146.32	486554001	146.32
308611008	146.32	486554002	146.32
308611009	146.32	486554003	146.32
308611011	146.32	486554004	146.32
308611012	146.32	486554005	146.32
308611013	146.32	486554006	146.32
308611014	146.32	486561001	146.32
308611015	146.32	486561002	146.32
308611016	146.32	486561003	146.32
308611017	146.32	486561005	146.32
308611018	146.32	486561006	146.32
308611019	146.32	486561007	146.32
308611020	146.32	486561008	146.32
308611021	146.32	486561009	146.32
308611022	146.32	486561010	146.32
308611024	146.32	486561011	146.32
308611026	146.32	486561012	146.32
308611027	146.32	486561013	146.32
308611028	146.32	486561015	146.32
308611029	146.32	486561016	146.32
308611030	146.32	486561017	146.32
308611031	146.32	486561018	146.32
308611032	146.32	486561019	146.32
308611033	146.32	486561020	146.32
308611034	146.32	486561021	146.32
308611036	146.32	486561022	146.32
308611037	146.32	486561023	146.32
308611038	146.32	486561024	146.32
308611039	146.32	486561025	146.32
308611040	146.32	486561026	146.32
308611042	146.32	486561027	146.32
308611043	146.32	486561028	146.32
308611044	146.32	486561029	146.32
308611045	146.32	486561031	146.32
308612001	146.32	486561032	146.32
308612002	146.32	486561033	146.32
308612003	146.32	486561034	146.32
308612004	146.32	486561035	146.32
308612005	146.32	486561036	146.32
308612006	146.32	486561037	146.32
308612007	146.32	486561038	146.32
308612008	146.32	486561039	146.32
308612009	146.32	486561041	146.32
308612010	146.32	486561042	146.32
308612011	146.32	486561043	146.32
308612012	146.32	486561045	146.32
308612014	146.32	486561046	146.32
308612015	146.32	486561047	146.32
308612016	146.32	486561048	146.32

Community Facilities District No. 1 (Park Maintenance) FY 2019/20 Tax Roll

APN	CFD No. 1 FY 2019/20 Applied Rate	APN	CFD No. 1 FY 2019/20 Applied Rate
308612017	146.32	486561049	146.32
308612018	146.32	486561050	146.32
308612019	146.32	486561052	146.32
308612021	146.32	486561053	146.32
308612022	146.32	486561054	146.32
308612023	146.32	486561056	146.32
308612024	146.32	486561057	146.32
308612025	146.32	486561058	146.32
308612026	146.32	486561059	146.32
308612028	146.32	486561060	146.32
308612029	146.32	486561061	146.32
308612030	146.32	486561062	146.32
308612031	146.32	486561063	146.32
308612032	146.32	486561064	146.32
308612033	146.32	486561066	146.32
308612035	146.32	486561067	146.32
308612036	146.32	486561068	146.32
308612037	146.32	486561070	146.32
308612038	146.32	486561071	146.32
308612039	146.32	486561072	146.32
308612040	146.32	486561074	146.32
308612042	146.32	486561075	146.32
308612043	146.32	486561076	146.32
308612044	146.32	486561077	146.32
308612045	146.32	486561078	146.32
308612046	146.32	486561079	146.32
308612047	146.32	487220001	146.32
308612048	146.32	487220002	146.32
308612049	146.32	487220003	146.32
308612050	146.32	487220004	146.32
308612051	146.32	487220005	146.32
308612052	146.32	487220006	146.32
308612053	146.32	487221001	146.32
308612054	146.32	487221002	146.32
308612055	146.32	487221003	146.32
308612056	146.32	487221004	146.32
308612057	146.32	487221005	146.32
308612058	146.32	487221006	146.32
308612060	146.32	487221007	146.32
308612061	146.32	487221008	146.32
308612062	146.32	487221009	146.32
308612063	146.32	487221010	146.32
308612064	146.32	487221011	146.32
308612065	146.32	487221012	146.32
308612066	146.32	487222003	146.32
308612067	146.32	487222004	146.32
308612068	146.32	487222005	146.32
308613001	146.32	487222006	146.32
308613002	146.32	487222007	146.32
308613003	146.32	487222008	146.32

Community Facilities District No. 1 (Park Maintenance) FY 2019/20 Tax Roll

APN	CFD No. 1 FY 2019/20 Applied Rate	APN	CFD No. 1 FY 2019/20 Applied Rate
308613004	146.32	487222009	146.32
308613006	146.32	487222010	146.32
308613007	146.32	487222011	146.32
308613008	146.32	487223001	146.32
308613009	146.32	487223002	146.32
308613011	146.32	487223003	146.32
308613012	146.32	487223004	146.32
308613013	146.32	487223005	146.32
308613014	146.32	487230001	146.32
308613015	146.32	487230002	146.32
308613016	146.32	487230003	146.32
308613018	146.32	487230004	146.32
308613019	146.32	487230005	146.32
308613020	146.32	487230006	146.32
308613021	146.32	487230007	146.32
308613022	146.32	487230008	146.32
308613023	146.32	487230009	146.32
308613025	146.32	487230010	146.32
308613026	146.32	487230011	146.32
308613027	146.32	487230012	146.32
308613028	146.32	487230013	146.32
308613029	146.32	487230014	146.32
308613030	146.32	487230015	146.32
308613031	146.32	487230016	146.32
308613032	146.32	487230017	146.32
308613034	146.32	487230018	146.32
308613035	146.32	487230019	146.32
308613036	146.32	487230020	146.32
308613037	146.32	487230021	146.32
308613039	146.32	487230022	146.32
308613040	146.32	487230023	146.32
308613041	146.32	487230024	146.32
308613042	146.32	487230025	146.32
308613043	146.32	487230026	146.32
308613044	146.32	487230027	146.32
308613045	146.32	487230028	146.32
308613046	146.32	487230029	146.32
308613047	146.32	487230030	146.32
308613048	146.32	487230031	146.32
308613050	146.32	487230032	146.32
308613051	146.32	487230033	146.32
308613052	146.32	487230034	146.32
308613053	146.32	487230035	146.32
312280001	146.32	487230036	146.32
312280002	146.32	487230037	146.32
312280003	146.32	487230038	146.32
312280004	146.32	487231001	146.32
312280005	146.32	487231002	146.32
312280006	146.32	487231003	146.32
312280007	146.32	487231004	146.32

Community Facilities District No. 1 (Park Maintenance) FY 2019/20 Tax Roll

APN	CFD No. 1 FY 2019/20 Applied Rate	APN	CFD No. 1 FY 2019/20 Applied Rate
312280008	146.32	487231005	146.32
312280009	146.32	487231006	146.32
312280010	146.32	487231007	146.32
312280011	146.32	487231008	146.32
312280012	146.32	487231009	146.32
312280013	146.32	487231010	146.32
312280014	146.32	487231011	146.32
312280015	146.32	487231012	146.32
312280016	146.32	487231013	146.32
312280017	146.32	487231014	146.32
312280018	146.32	487231015	146.32
312280019	146.32	487231016	146.32
312280020	146.32	487231017	146.32
312280021	146.32	487232001	146.32
312281001	146.32	487232002	146.32
312281002	146.32	487232003	146.32
312281003	146.32	487232004	146.32
312281004	146.32	487232005	146.32
312281005	146.32	487232006	146.32
312281006	146.32	487232007	146.32
312281007	146.32	487232008	146.32
312281008	146.32	487232009	146.32
312281009	146.32	487240001	146.32
312281010	146.32	487240002	146.32
312281011	146.32	487240003	146.32
312281012	146.32	487240004	146.32
312281013	146.32	487241001	146.32
312281014	146.32	487241002	146.32
312281015	146.32	487241003	146.32
312281016	146.32	487241004	146.32
312281017	146.32	487241005	146.32
312281018	146.32	487241006	146.32
312281019	146.32	487241007	146.32
312281020	146.32	487241008	146.32
312281021	146.32	487241009	146.32
312281022	146.32	487241010	146.32
312281023	146.32	487241011	146.32
312281024	146.32	487241012	146.32
312281025	146.32	487241013	146.32
312290002	146.32	487241014	146.32
312290003	146.32	487241015	146.32
312290004	146.32	487241016	146.32
312290005	146.32	487241017	146.32
312290006	146.32	487242001	146.32
312290007	146.32	487242002	146.32
312290008	146.32	487242003	146.32
312290009	146.32	487242004	146.32
312290010	146.32	487242005	146.32
312290011	146.32	487242006	146.32
312290012	146.32	487242007	146.32

Community Facilities District No. 1 (Park Maintenance) FY 2019/20 Tax Roll

APN	CFD No. 1 FY 2019/20 Applied Rate	APN	CFD No. 1 FY 2019/20 Applied Rate
312290013	146.32	487242008	146.32
312290014	146.32	487242009	146.32
312290015	146.32	487242010	146.32
312290016	146.32	487242011	146.32
312290017	146.32	487243001	146.32
312290018	146.32	487243002	146.32
312290019	146.32	487243003	146.32
312290020	146.32	487243004	146.32
312290021	146.32	487243005	146.32
312290022	146.32	487243006	146.32
312290023	146.32	487243007	146.32
312290024	146.32	487243008	146.32
312290025	146.32	487243009	146.32
312290026	146.32	487243010	146.32
312290027	146.32	487243011	146.32
312290028	146.32	487243012	146.32
312290029	146.32	487243013	146.32
312290030	146.32	487243014	146.32
312290031	146.32	487243015	146.32
312290032	146.32	487243016	146.32
312290033	146.32	487243017	146.32
312290034	146.32	487243018	146.32
312290035	146.32	487243019	146.32
312290036	146.32	487243020	146.32
312290037	146.32	487243021	146.32
312290038	146.32	487243022	146.32
312290039	146.32	487243023	146.32
312290040	146.32	487243024	146.32
312291001	146.32	487243025	146.32
312291002	146.32	487243026	146.32
312291003	146.32	487243027	146.32
312291004	146.32	487260002	1,463.20
312291005	146.32	487260003	1,463.20
312291006	146.32	487260004	877.92
312291007	146.32	487260005	877.92
312291008	146.32	487310001	146.32
312291009	146.32	487310002	146.32
312291010	146.32	487310003	146.32
312292001	146.32	487310004	146.32
312292002	146.32	487310005	146.32
312292003	146.32	487310006	146.32
312292004	146.32	487310007	146.32
312292005	146.32	487310008	146.32
312292006	146.32	487310009	146.32
312292007	146.32	487310010	146.32
312292008	146.32	487310011	146.32
312292009	146.32	487310012	146.32
312292011	146.32	487310013	146.32
312292012	146.32	487310014	146.32
312292013	146.32	487310015	146.32

Community Facilities District No. 1 (Park Maintenance) FY 2019/20 Tax Roll

APN	CFD No. 1 FY 2019/20 Applied Rate	APN	CFD No. 1 FY 2019/20 Applied Rate
312292014	146.32	487310016	146.32
312292015	146.32	487310017	146.32
312292016	146.32	487310018	146.32
312292017	146.32	487310019	146.32
312310001	146.32	487310020	146.32
312310002	146.32	487310021	146.32
312310003	146.32	487310022	146.32
312310004	146.32	487310023	146.32
312310005	146.32	487310024	146.32
312310006	146.32	487310025	146.32
312310007	146.32	487310026	146.32
312310008	146.32	487310027	146.32
312310009	146.32	487310028	146.32
312311001	146.32	487310029	146.32
312311002	146.32	487310030	146.32
312311003	146.32	487310031	146.32
312311004	146.32	487310032	146.32
312311005	146.32	487310033	146.32
312311006	146.32	487480001	146.32
312311007	146.32	487480002	146.32
312311008	146.32	487480003	146.32
312311009	146.32	487480004	146.32
312311010	146.32	487480005	146.32
312311011	146.32	487480006	146.32
312311012	146.32	487480007	146.32
312311013	146.32	487480008	146.32
312311014	146.32	487480009	146.32
312312001	146.32	487480010	146.32
312312002	146.32	487480011	146.32
312312003	146.32	487480012	146.32
312312004	146.32	487480013	146.32
312312005	146.32	487480014	146.32
312312006	146.32	487480015	146.32
312312007	146.32	487481001	146.32
312312008	146.32	487481002	146.32
312312009	146.32	487481003	146.32
312312010	146.32	487481004	146.32
312312011	146.32	487481005	146.32
312312012	146.32	487481006	146.32
312313001	146.32	487481007	146.32
312313002	146.32	487481008	146.32
312313003	146.32	487481009	146.32
312313004	146.32	487481010	146.32
312313005	146.32	487481011	146.32
312313006	146.32	487481012	146.32
312313007	146.32	487481013	146.32
312313008	146.32	487481014	146.32
312313009	146.32	487481015	146.32
312313010	146.32	487481016	146.32
312313011	146.32	487481017	146.32

Community Facilities District No. 1 (Park Maintenance) FY 2019/20 Tax Roll

APN	CFD No. 1 FY 2019/20 Applied Rate	APN	CFD No. 1 FY 2019/20 Applied Rate
312313012	146.32	487481018	146.32
474250059	146.32	487481019	146.32
474740001	146.32	487481020	146.32
474740002	146.32	487481021	146.32
474740003	146.32	487481022	146.32
474740004	146.32	487481023	146.32
474740005	146.32	487481024	146.32
474740006	146.32	487481025	146.32
474740007	146.32	487481026	146.32
474740008	146.32	487481027	146.32
474740009	146.32	487481028	146.32
474740010	146.32	487481029	146.32
474740011	146.32	487481030	146.32
474740012	146.32	487481031	146.32
474740013	146.32	487481032	146.32
474741001	146.32	487481033	146.32
474741002	146.32	487481034	146.32
474741003	146.32	487481035	146.32
474741004	146.32	487481036	146.32
474741005	146.32	487481037	146.32
474741006	146.32	487481038	146.32
474741007	146.32	487481039	146.32
474742001	146.32	487481040	146.32
474742002	146.32	487481041	146.32
474742003	146.32	487481042	146.32
474742004	146.32	487481043	146.32
474742005	146.32	487481044	146.32
474750004	146.32	487481045	146.32
474750005	146.32	487481046	146.32
474750006	146.32	487481047	146.32
474750007	146.32	487481048	146.32
474750008	146.32	487481049	146.32
474750009	146.32	487481050	146.32
474750010	146.32	487481051	146.32
474750011	146.32	487482001	146.32
474750012	146.32	487482002	146.32
474750013	146.32	487482003	146.32
474750014	146.32	487482004	146.32
474750015	146.32	487482005	146.32
474750016	146.32	487482006	146.32
474750017	146.32	487482007	146.32
474750018	146.32	487482008	146.32
474750019	146.32	487482009	146.32
474750020	146.32	487482010	146.32
474751001	146.32	487482011	146.32
474751002	146.32	487483001	146.32
474751003	146.32	487483002	146.32
474751004	146.32	487483003	146.32
474751005	146.32	487500001	146.32
474751006	146.32	487500002	146.32

Community Facilities District No. 1 (Park Maintenance) FY 2019/20 Tax Roll

APN	CFD No. 1 FY 2019/20 Applied Rate	APN	CFD No. 1 FY 2019/20 Applied Rate
474751007	146.32	487500003	146.32
474751008	146.32	487500004	146.32
474751009	146.32	487500005	146.32
474751010	146.32	487500006	146.32
474751011	146.32	487500007	146.32
474751012	146.32	487500008	146.32
474751013	146.32	487500009	146.32
474751014	146.32	487500010	146.32
474751015	146.32	487500011	146.32
474751016	146.32	487500012	146.32
474751017	146.32	487500013	146.32
474751018	146.32	487500014	146.32
474751019	146.32	487500015	146.32
474751020	146.32	487500016	146.32
474760001	146.32	487500017	146.32
474760002	146.32	487500018	146.32
474760003	146.32	487500019	146.32
474760004	146.32	487500020	146.32
474760005	146.32	487500021	146.32
474760006	146.32	487500022	146.32
474760007	146.32	487500023	146.32
474760008	146.32	487500024	146.32
474760009	146.32	487500025	146.32
474760010	146.32	487500026	146.32
474760011	146.32	487500027	146.32
474760012	146.32	487500028	146.32
474760013	146.32	487500029	146.32
474760014	146.32	487500030	146.32
474760015	146.32	487500031	146.32
474760016	146.32	487500032	146.32
474760017	146.32	487500033	146.32
474760018	146.32	487500034	146.32
474760019	146.32	487500035	146.32
474760020	146.32	487500036	146.32
474760021	146.32	487500037	146.32
474761001	146.32	487500038	146.32
474761002	146.32	487500039	146.32
474761003	146.32	487500040	146.32
474761004	146.32	487500041	146.32
474761005	146.32	487500042	146.32
474761006	146.32	487500043	146.32
474761007	146.32	487500044	146.32
474761008	146.32	487500045	146.32
474761009	146.32	487500046	146.32
474761010	146.32	487500047	146.32
474761011	146.32	487500048	146.32
474761012	146.32	487500049	146.32
475150044	146.32	487500050	146.32
475150045	146.32	487500051	146.32
475150046	146.32	487500052	146.32

Community Facilities District No. 1 (Park Maintenance) FY 2019/20 Tax Roll

APN	CFD No. 1 FY 2019/20 Applied Rate	APN	CFD No. 1 FY 2019/20 Applied Rate
475150047	146.32	487500053	146.32
475150048	146.32	487500054	146.32
475150049	146.32	487500055	146.32
475150050	146.32	487501001	146.32
475150051	146.32	487501002	146.32
475150052	146.32	487501003	146.32
475150053	146.32	487501004	146.32
475150054	146.32	487501005	146.32
478280037	146.32	487501006	146.32
478280038	146.32	487501007	146.32
478280039	146.32	487501008	146.32
478280040	146.32	487502001	146.32
478291005	146.32	487502002	146.32
478291006	146.32	487502003	146.32
478291007	146.32	487502004	146.32
478291008	146.32	487502005	146.32
478291009	146.32	487502006	146.32
478291010	146.32	487502007	146.32
478352009	146.32	487502008	146.32
478352010	146.32	487502009	146.32
478352011	146.32	487502010	146.32
478352012	146.32	487502011	146.32
478352013	146.32	487502012	146.32
478352014	146.32	487502013	146.32
478352015	146.32	487502014	146.32
478352016	146.32	487510001	146.32
478352017	146.32	487510002	146.32
478352018	146.32	487510003	146.32
478352019	146.32	487510004	146.32
478352020	146.32	487510005	146.32
478352021	146.32	487510006	146.32
478352022	146.32	487510007	146.32
478352023	146.32	487510008	146.32
478352024	146.32	487510009	146.32
478361005	146.32	487510010	146.32
478361006	146.32	487510011	146.32
478361007	146.32	487510012	146.32
478361008	146.32	487511001	146.32
478361009	146.32	487511002	146.32
478361010	146.32	487511003	146.32
478361011	146.32	487511004	146.32
478361012	146.32	487511005	146.32
478361013	146.32	487511006	146.32
478361014	146.32	487511007	146.32
478361015	146.32	487511008	146.32
478361016	146.32	487511009	146.32
478361017	146.32	487511010	146.32
478361018	146.32	487511011	146.32
478361019	146.32	487511012	146.32
478361020	146.32	487511013	146.32

Community Facilities District No. 1 (Park Maintenance) FY 2019/20 Tax Roll

APN	CFD No. 1 FY 2019/20 Applied Rate	APN	CFD No. 1 FY 2019/20 Applied Rate
478361021	146.32	487511014	146.32
478361022	146.32	487512001	146.32
478361023	146.32	487512002	146.32
478361024	146.32	487512003	146.32
478400010	146.32	487512004	146.32
478400011	146.32	487512005	146.32
478400012	146.32	487512006	146.32
478400016	146.32	487512007	146.32
478400017	146.32	487512008	146.32
478400019	146.32	487512009	146.32
478400021	146.32	487512010	146.32
478400023	146.32	487513001	146.32
478400025	146.32	487513002	146.32
478400027	146.32	487513003	146.32
478400029	146.32	487513004	146.32
478400031	146.32	487513005	146.32
478400033	146.32	487513006	146.32
478400035	146.32	487513007	146.32
478400037	146.32	487513008	146.32
478400039	146.32	487513009	146.32
478400041	146.32	487513010	146.32
478401001	146.32	487513011	146.32
478401002	146.32	487513012	146.32
478401003	146.32	487513013	146.32
478401004	146.32	487513014	146.32
478401005	146.32	487513015	146.32
478402001	146.32	487513016	146.32
478402002	146.32	487513017	146.32
478402003	146.32	487513018	146.32
478402004	146.32	487513019	146.32
478402005	146.32	487513020	146.32
478402006	146.32	487513021	146.32
478402007	146.32	487513022	146.32
478402008	146.32	487513023	146.32
478402009	146.32	487513024	146.32
478402010	146.32	487513025	146.32
478402011	146.32	487513026	146.32
478402012	146.32	487514001	146.32
478402013	146.32	487514002	146.32
478402014	146.32	487514003	146.32
478402015	146.32	487514004	146.32
478440011	146.32	487520001	146.32
478440012	146.32	487520002	146.32
478440013	146.32	487520003	146.32
478440014	146.32	487520004	146.32
478440015	146.32	487520005	146.32
478440016	146.32	487520006	146.32
478440017	146.32	487520007	146.32
478440018	146.32	487520008	146.32
478440019	146.32	487520009	146.32

Community Facilities District No. 1 (Park Maintenance) FY 2019/20 Tax Roll

Community Facilities District No. 1 (Park Maintenance) FY 2019/20 Tax Roll

APN	CFD No. 1 FY 2019/20 Applied Rate	APN	CFD No. 1 FY 2019/20 Applied Rate
478440020	146.32	487520010	146.32
478440021	146.32	487520011	146.32
478440022	146.32	487520012	146.32
478440023	146.32	487520013	146.32
478440024	146.32	487520014	146.32
478440025	146.32	487520015	146.32
478440026	146.32	487520016	146.32
478440027	146.32	487520017	146.32
478440028	146.32	487520018	146.32
478440029	146.32	487520019	146.32
478440030	146.32	487520020	146.32
478440031	146.32	487520021	146.32
478440032	146.32	487520022	146.32
478440033	146.32	487520023	146.32
478440034	146.32	487520024	146.32
478440035	146.32	487520025	146.32
478440036	146.32	487520026	146.32
478440037	146.32	487520027	146.32
478440038	146.32	487520028	146.32
478440039	146.32	487520029	146.32
478440040	146.32	487520030	146.32
478440041	146.32	487520031	146.32
478440042	146.32	487520032	146.32
478440043	146.32	487520033	146.32
478440044	146.32	487520034	146.32
478440045	146.32	487521001	146.32
478440046	146.32	487521002	146.32
478441015	146.32	487521003	146.32
478441016	146.32	487521004	146.32
478441017	146.32	487521005	146.32
478441018	146.32	487521006	146.32
478441019	146.32	487521007	146.32
478441020	146.32	487522001	146.32
478441021	146.32	487522002	146.32
478450001	146.32	487522003	146.32
478450002	146.32	487522004	146.32
478450003	146.32	487522005	146.32
478450004	146.32	487522006	146.32
478450005	146.32	487522007	146.32
478450006	146.32	487522008	146.32
478450007	146.32	487522009	146.32
478450008	146.32	487522010	146.32
478450009	146.32	487522011	146.32
478450010	146.32	487522012	146.32
478450011	146.32	487522013	146.32
478450012	146.32	487522014	146.32
478450013	146.32	487522015	146.32
478450014	146.32	487522016	146.32
478450015	146.32	487522017	146.32
478450016	146.32	487522018	146.32

APN	CFD No. 1 FY 2019/20 Applied Rate	APN	CFD No. 1 FY 2019/20 Applied Rate
478450017	146.32	487522019	146.32
478450018	146.32	487522020	146.32
478450019	146.32	487522021	146.32
478450020	146.32	487523001	146.32
478450021	146.32	487530001	146.32
478450022	146.32	487530002	146.32
478450023	146.32	487530003	146.32
478450024	146.32	487530004	146.32
478450025	146.32	487530005	146.32
478450026	146.32	487530006	146.32
478450027	146.32	487530007	146.32
478450028	146.32	487530008	146.32
478450029	146.32	487530009	146.32
478450030	146.32	487530010	146.32
478450031	146.32	487530011	146.32
478450032	146.32	487530012	146.32
478451001	146.32	487530013	146.32
478451002	146.32	487530014	146.32
478451003	146.32	487530015	146.32
478451004	146.32	487530016	146.32
478451005	146.32	487530017	146.32
478451006	146.32	487530018	146.32
478451007	146.32	487530019	146.32
478451008	146.32	487530020	146.32
478451009	146.32	487530021	146.32
478452001	146.32	487530022	146.32
478452002	146.32	487531001	146.32
478452003	146.32	487531002	146.32
478452004	146.32	487531003	146.32
478452005	146.32	487531004	146.32
478452006	146.32	487531005	146.32
478452007	146.32	487531006	146.32
478452008	146.32	487531007	146.32
478452009	146.32	487531008	146.32
478452010	146.32	487531009	146.32
478452011	146.32	487531010	146.32
478452012	146.32	487531011	146.32
478452013	146.32	487531012	146.32
478452014	146.32	487531013	146.32
478452015	146.32	487531014	146.32
478452016	146.32	487531015	146.32
478452017	146.32	487531016	146.32
478452018	146.32	487531017	146.32
478452019	146.32	487531018	146.32
478452020	146.32	487531019	146.32
478452021	146.32	487532001	146.32
478460001	146.32	487532002	146.32
478460002	146.32	487532003	146.32
478460003	146.32	487532004	146.32
478460004	146.32	487532005	146.32

Community Facilities District No. 1 (Park Maintenance) FY 2019/20 Tax Roll

APN	CFD No. 1 FY 2019/20 Applied Rate	APN	CFD No. 1 FY 2019/20 Applied Rate
478460005	146.32	487532006	146.32
478460006	146.32	487532007	146.32
478460007	146.32	487532008	146.32
478461001	146.32	487532009	146.32
478461002	146.32	487532010	146.32
478461003	146.32	487532011	146.32
478461004	146.32	487532012	146.32
478461005	146.32	487532013	146.32
478461006	146.32	487532014	146.32
478461007	146.32	487532015	146.32
478461008	146.32	487532016	146.32
478461009	146.32	487532017	146.32
478461010	146.32	487532018	146.32
478461011	146.32	487532019	146.32
478461012	146.32	487532020	146.32
478461013	146.32	487532021	146.32
478461014	146.32	487532022	146.32
478461015	146.32	487532023	146.32
478461016	146.32	487532024	146.32
478461017	146.32	487540001	146.32
478461018	146.32	487540002	146.32
478461019	146.32	487540003	146.32
478461020	146.32	487540004	146.32
478461021	146.32	487540005	146.32
478461022	146.32	487540006	146.32
478461023	146.32	487540007	146.32
478462001	146.32	487540008	146.32
478462002	146.32	487540009	146.32
478462003	146.32	487540010	146.32
478462004	146.32	487540011	146.32
478462005	146.32	487540012	146.32
478462006	146.32	487540013	146.32
478462007	146.32	487540014	146.32
478462008	146.32	487540015	146.32
478462009	146.32	487540016	146.32
478462010	146.32	487541001	146.32
478462011	146.32	487541002	146.32
478462012	146.32	487541003	146.32
478462013	146.32	487541004	146.32
478462014	146.32	487541005	146.32
479670001	146.32	487541006	146.32
479670002	146.32	487541007	146.32
479670003	146.32	487541008	146.32
479670004	146.32	487550001	146.32
479670005	146.32	487550002	146.32
479670006	146.32	487550003	146.32
479670007	146.32	487550004	146.32
479670008	146.32	487551001	146.32
479670009	146.32	487551002	146.32
479670010	146.32	487551003	146.32

Community Facilities District No. 1 (Park Maintenance) FY 2019/20 Tax Roll

APN	CFD No. 1 FY 2019/20 Applied Rate	APN	CFD No. 1 FY 2019/20 Applied Rate
479670011	146.32	487551004	146.32
479670012	146.32	487551005	146.32
479670013	146.32	487551006	146.32
479670014	146.32	487551007	146.32
479670015	146.32	487551008	146.32
479670016	146.32	487560001	146.32
479670017	146.32	487560002	146.32
479670018	146.32	487560003	146.32
479670019	146.32	487560004	146.32
479670020	146.32	487560005	146.32
479670021	146.32	487560006	146.32
479670022	146.32	487560007	146.32
479670023	146.32	487560008	146.32
479670024	146.32	487560009	146.32
479670025	146.32	487560010	146.32
479670026	146.32	487560011	146.32
479670027	146.32	487560012	146.32
479670028	146.32	487560013	146.32
479670029	146.32	487560014	146.32
479670030	146.32	487560015	146.32
479670031	146.32	487560016	146.32
479670032	146.32	487560017	146.32
479670033	146.32	487560018	146.32
479670034	146.32	487560019	146.32
479670035	146.32	487560020	146.32
479670036	146.32	487560021	146.32
479670037	146.32	487560022	146.32
479670038	146.32	487560023	146.32
479670039	146.32	487560024	146.32
479670040	146.32	487560025	146.32
479671001	146.32	487560026	146.32
479671002	146.32	487560027	146.32
479671003	146.32	487560028	146.32
479671004	146.32	487560029	146.32
479671005	146.32	487560030	146.32
479671006	146.32	487560031	146.32
479671007	146.32	487560032	146.32
479671008	146.32	487560033	146.32
479671009	146.32	487560034	146.32
479671010	146.32	487561001	146.32
479671011	146.32	487561002	146.32
479671012	146.32	487561003	146.32
479671013	146.32	487561004	146.32
479671014	146.32	487561005	146.32
479671015	146.32	487561006	146.32
479671016	146.32	487561007	146.32
479671017	146.32	487561008	146.32
479671018	146.32	487561009	146.32
479671019	146.32	487561010	146.32
479671020	146.32	487561011	146.32

Community Facilities District No. 1 (Park Maintenance) FY 2019/20 Tax Roll

APN	CFD No. 1 FY 2019/20 Applied Rate	APN	CFD No. 1 FY 2019/20 Applied Rate
479672001	146.32	487561012	146.32
479672002	146.32	487561013	146.32
479672003	146.32	487561014	146.32
479672004	146.32	487561015	146.32
479672005	146.32	487561016	146.32
479672006	146.32	487561017	146.32
479672007	146.32	487561018	146.32
479672008	146.32	487561019	146.32
479672009	146.32	487561020	146.32
479672010	146.32	487561021	146.32
479672011	146.32	487561022	146.32
479672012	146.32	487561023	146.32
479672013	146.32	487561024	146.32
479672014	146.32	487561025	146.32
479672015	146.32	487561026	146.32
479672016	146.32	487561027	146.32
479672017	146.32	487561028	146.32
479680001	146.32	487561029	146.32
479680002	146.32	487561030	146.32
479680003	146.32	487561031	146.32
479680004	146.32	487561032	146.32
479680005	146.32	487561033	146.32
479680006	146.32	487561034	146.32
479681001	146.32	487561035	146.32
479681002	146.32	487561036	146.32
479681003	146.32	487561037	146.32
479681004	146.32	487561038	146.32
479681005	146.32	487561039	146.32
479681006	146.32	487561040	146.32
479681007	146.32	487561041	146.32
479681008	146.32	487561042	146.32
479681009	146.32	487561043	146.32
479681010	146.32	487561044	146.32
479681011	146.32	487570013	146.32
479690002	146.32	487570014	146.32
479690003	146.32	487570015	146.32
479690004	146.32	487570016	146.32
479690005	146.32	487570017	146.32
479690006	146.32	487570018	146.32
479690007	146.32	487570019	146.32
479690008	146.32	487571001	146.32
479690009	146.32	487571002	146.32
479690010	146.32	487571003	146.32
479690011	146.32	487571004	146.32
479690012	146.32	487571005	146.32
479690013	146.32	487572001	146.32
479690014	146.32	487572002	146.32
479690015	146.32	487572003	146.32
479690016	146.32	487572004	146.32
479690017	146.32	487572005	146.32

Community Facilities District No. 1 (Park Maintenance) FY 2019/20 Tax Roll

APN	CFD No. 1 FY 2019/20 Applied Rate	APN	CFD No. 1 FY 2019/20 Applied Rate
479690018	146.32	487572006	146.32
479690019	146.32	487572007	146.32
479690020	146.32	487572008	146.32
479690021	146.32	487572009	146.32
479690022	146.32	487572010	146.32
479690023	146.32	487572011	146.32
479690024	146.32	487572012	146.32
479690025	146.32	487572013	146.32
479690026	146.32	487572014	146.32
479690027	146.32	487572015	146.32
479690028	146.32	487572016	146.32
479691001	146.32	487572017	146.32
479691002	146.32	487572018	146.32
479691003	146.32	487572019	146.32
479691004	146.32	487572020	146.32
479691005	146.32	487572021	146.32
479691006	146.32	487572022	146.32
479691007	146.32	487572023	146.32
479691008	146.32	487572024	146.32
486542013	146.32	487572025	146.32
486542014	146.32	487572026	146.32
486542015	146.32	487572027	146.32
486542016	146.32	487572028	146.32
486542017	146.32	487572029	146.32
486542018	146.32	487572030	146.32
486542019	146.32	487572031	146.32
486542020	146.32	487572032	146.32
486542021	146.32	487572033	146.32
486542022	146.32	487572034	146.32
486542023	146.32	487572035	146.32
486542024	146.32	487572036	146.32
486542025	146.32	487572037	146.32
486542026	146.32	487572038	146.32
486542027	146.32	487572039	146.32
486542028	146.32	487572040	146.32
486542029	146.32	487572041	146.32
486542030	146.32	487572042	146.32
486542031	146.32	487572043	146.32
486542032	146.32	487572044	146.32
486542033	146.32	487573001	146.32
486542034	146.32	487573002	146.32
486542035	146.32	487573003	146.32
486542036	146.32	488100022	35,994.72
486542037	146.32	488110001	146.32
486542038	146.32	488110002	146.32
486542039	146.32	488110003	146.32
486542040	146.32	488110004	146.32
486543001	146.32	488110005	146.32
486543002	146.32	488110006	146.32
486543003	146.32	488110007	146.32

Community Facilities District No. 1 (Park Maintenance) FY 2019/20 Tax Roll

APN	CFD No. 1 FY 2019/20 Applied Rate	APN	CFD No. 1 FY 2019/20 Applied Rate
486543004	146.32	488110008	146.32
486543005	146.32	488110009	146.32
486543006	146.32	488110010	146.32
486543007	146.32	488110011	146.32
486543008	146.32	488110012	146.32
486543009	146.32	488110013	146.32
486543010	146.32	488110014	146.32
486543011	146.32	488110015	146.32
486543012	146.32	488110016	146.32
486562001	146.32	488110017	146.32
486562002	146.32	488110018	146.32
486562003	146.32	488110019	146.32
486562004	146.32	488110059	146.32
486562005	146.32	488110060	146.32
486562008	146.32	488110061	146.32
486562009	146.32	488110062	146.32
486562010	146.32	488110063	146.32
486562011	146.32	488110064	146.32
486562012	146.32	488110065	146.32
486562013	146.32	488110066	146.32
486562015	146.32	488110067	146.32
486562016	146.32	488110068	146.32
486562017	146.32	488110069	146.32
486562018	146.32	488110070	146.32
486562019	146.32	488110071	146.32
486562020	146.32	488110072	146.32
486562022	146.32	488110073	146.32
486562023	146.32	488110074	146.32
486562024	146.32	488110075	146.32
486562025	146.32	488110076	146.32
486562026	146.32	488110077	146.32
486562027	146.32	488110078	146.32
486562029	146.32	488110079	146.32
486562030	146.32	488110080	146.32
486562031	146.32	488110081	146.32
486562032	146.32	488110089	146.32
486562033	146.32	488110090	146.32
486562034	146.32	488110091	146.32
486562036	146.32	488110092	146.32
486562037	146.32	488110093	146.32
486562038	146.32	488110094	146.32
486562039	146.32	488120001	146.32
486562040	146.32	488120002	146.32
486562041	146.32	488120003	146.32
486562043	146.32	488120004	146.32
486562044	146.32	488120005	146.32
486562045	146.32	488120006	146.32
486562046	146.32	488120007	146.32
486562047	146.32	488120008	146.32
486562048	146.32	488120009	146.32

Community Facilities District No. 1 (Park Maintenance) FY 2019/20 Tax Roll

APN	CFD No. 1 FY 2019/20 Applied Rate	APN	CFD No. 1 FY 2019/20 Applied Rate
486562049	146.32	488120010	146.32
486562050	146.32	488120011	146.32
486562051	146.32	488120012	146.32
486562053	146.32	488120013	146.32
486562054	146.32	488120015	146.32
486562055	146.32	488120016	146.32
486562057	146.32	488120017	146.32
486562058	146.32	488120018	146.32
486562059	146.32	488120019	146.32
486562061	146.32	488120020	146.32
486562062	146.32	488120021	146.32
486562063	146.32	488120022	146.32
486562064	146.32	488120023	146.32
486562065	146.32	488120024	146.32
486562066	146.32	488120025	146.32
487570001	146.32	488120026	146.32
487570002	146.32	488120027	146.32
487570003	146.32	488120028	146.32
487570004	146.32	488120029	146.32
487570005	146.32	488120030	146.32
487570006	146.32	488120031	146.32
487570007	146.32	488120032	146.32
487570008	146.32	488120033	146.32
487570009	146.32	488120034	146.32
487570010	146.32	488120035	146.32
487570011	146.32	488120036	146.32
487570012	146.32	488121001	146.32
487580001	146.32	488121002	146.32
487580002	146.32	488121003	146.32
487580003	146.32	488121005	146.32
487580004	146.32	488121006	146.32
487580005	146.32	488121007	146.32
487580006	146.32	488121008	146.32
487580007	146.32	488121009	146.32
487580008	146.32	488121010	146.32
487580009	146.32	488121011	146.32
487580010	146.32	488121012	146.32
487580011	146.32	488121013	146.32
487580012	146.32	488121014	146.32
487580013	146.32	488121015	146.32
487580014	146.32	488121016	146.32
487580015	146.32	488121017	146.32
487580016	146.32	488121018	146.32
487581001	146.32	488121019	146.32
487581002	146.32	488121020	146.32
487581003	146.32	488121021	146.32
487581004	146.32	488121022	146.32
487581005	146.32	488121023	146.32
487581006	146.32	488122001	146.32
487581007	146.32	488122002	146.32

Community Facilities District No. 1 (Park Maintenance) FY 2019/20 Tax Roll

APN	CFD No. 1 FY 2019/20 Applied Rate	APN	CFD No. 1 FY 2019/20 Applied Rate
487582001	146.32	488122003	146.32
487582002	146.32	488122004	146.32
487582003	146.32	488122005	146.32
487582004	146.32	488122006	146.32
487582005	146.32	488122007	146.32
487582006	146.32	488122008	146.32
487582007	146.32	488122009	146.32
487582008	146.32	488122010	146.32
487582009	146.32	488122011	146.32
487582010	146.32	488122012	146.32
487582011	146.32	488122013	146.32
487582012	146.32	488122014	146.32
487582013	146.32	488122015	146.32
487582014	146.32	488122016	146.32
487582015	146.32	488122017	146.32
487582016	146.32	488122018	146.32
487582017	146.32	488122019	146.32
487582018	146.32	488122020	146.32
487590001	146.32	488122021	146.32
487590002	146.32	488122022	146.32
487590003	146.32	488122023	146.32
487590004	146.32	488122024	146.32
487590005	146.32	488122025	146.32
487590006	146.32	488122026	146.32
487590007	146.32	488122027	146.32
487590008	146.32	488122028	146.32
487590009	146.32	488122029	146.32
487590010	146.32	488122030	146.32
487590011	146.32	488122031	146.32
487590012	146.32	488122032	146.32
487590013	146.32	488122033	146.32
487590014	146.32	488122034	146.32
487590015	146.32	488122035	146.32
487590016	146.32	488122036	146.32
487591001	146.32	488130001	146.32
487591002	146.32	488130002	146.32
487591003	146.32	488130003	146.32
487591004	146.32	488130004	146.32
487591005	146.32	488131001	146.32
487591006	146.32	488131002	146.32
487591007	146.32	488131003	146.32
487591008	146.32	488131004	146.32
487591009	146.32	488131005	146.32
487591010	146.32	488131006	146.32
487591011	146.32	488131007	146.32
487591012	146.32	488131008	146.32
487591013	146.32	488131009	146.32
487591014	146.32	488131010	146.32
487591015	146.32	488131011	146.32
487591016	146.32	488131012	146.32

Community Facilities District No. 1 (Park Maintenance) FY 2019/20 Tax Roll

APN	CFD No. 1 FY 2019/20 Applied Rate	APN	CFD No. 1 FY 2019/20 Applied Rate
487591017	146.32	488131013	146.32
487591018	146.32	488131014	146.32
487591019	146.32	488131015	146.32
487591020	146.32	488131016	146.32
487592001	146.32	488131017	146.32
487592002	146.32	488131018	146.32
487592003	146.32	488131019	146.32
487592004	146.32	488131020	146.32
487592005	146.32	488131021	146.32
487592006	146.32	488132001	146.32
487592007	146.32	488132002	146.32
487592008	146.32	488132003	146.32
487592009	146.32	488132004	146.32
488110055	146.32	488132005	146.32
488110056	146.32	488132006	146.32
488110057	146.32	488132007	146.32
488110058	146.32	488132008	146.32
488410001	146.32	488132009	146.32
488410002	146.32	488132010	146.32
488410003	146.32	488132011	146.32
488410004	146.32	488132012	146.32
488410005	146.32	488132013	146.32
488410006	146.32	488132014	146.32
488410007	146.32	488132015	146.32
488410008	146.32	488132016	146.32
488410009	146.32	488132017	146.32
488410010	146.32	488132018	146.32
488410011	146.32	488132019	146.32
488410012	146.32	488132020	146.32
488410013	146.32	488132021	146.32
488410014	146.32	488132022	146.32
488410015	146.32	488132023	146.32
488410016	146.32	488132024	146.32
488410017	146.32	488132025	146.32
488410018	146.32	488132026	146.32
488410019	146.32	488132027	146.32
488410020	146.32	488132028	146.32
488410021	146.32	488132029	146.32
488410022	146.32	488132030	146.32
488410053	146.32	488132031	146.32
488410054	146.32	488132032	146.32
488410055	146.32	488132033	146.32
488410056	146.32	488132034	146.32
488410057	146.32	488132035	146.32
488410058	146.32	488132036	146.32
488410059	146.32	488132037	146.32
488420001	146.32	488132038	146.32
488420002	146.32	488132039	146.32
488420003	146.32	488132040	146.32
488420004	146.32	488132041	146.32

Community Facilities District No. 1 (Park Maintenance) FY 2019/20 Tax Roll

APN	CFD No. 1 FY 2019/20 Applied Rate	APN	CFD No. 1 FY 2019/20 Applied Rate
488420005	146.32	488133001	146.32
488420006	146.32	488133002	146.32
488420007	146.32	488133003	146.32
488420008	146.32	488133004	146.32
488420009	146.32	488133005	146.32
488420010	146.32	488133006	146.32
488420011	146.32	488133007	146.32
488420012	146.32	488133008	146.32
488420013	146.32	488133009	146.32
488420014	146.32	488133010	146.32
488420015	146.32	488133011	146.32
488420016	146.32	488133012	146.32
488420017	146.32	488133013	146.32
488420018	146.32	488133014	146.32
488420019	146.32	488133015	146.32
488420020	146.32	488133016	146.32
488420021	146.32	488133017	146.32
488420022	146.32	488133018	146.32
488420023	146.32	488133019	146.32
488420024	146.32	488133020	146.32
488420025	146.32	488133021	146.32
488420026	146.32	488133022	146.32
488420027	146.32	488133023	146.32
488420028	146.32	488133024	146.32
488420029	146.32	488133025	146.32
488420030	146.32	488133026	146.32
488420031	146.32	488133027	146.32
488420032	146.32	488133028	146.32
488420033	146.32	488133029	146.32
488420034	146.32	488133030	146.32
488420035	146.32	488133031	146.32
488420036	146.32	488133032	146.32
488420037	146.32	488133033	146.32
488420038	146.32	488133034	146.32
488420039	146.32	488133035	146.32
488420040	146.32	488133036	146.32
488420041	146.32	488133037	146.32
488420042	146.32	488133038	146.32
488420043	146.32	488140001	146.32
488430003	146.32	488140002	146.32
488430004	146.32	488140003	146.32
488430005	146.32	488140004	146.32
488430006	146.32	488140005	146.32
488430007	146.32	488140006	146.32
488430008	146.32	488140007	146.32
488430009	146.32	488140008	146.32
488430010	146.32	488140009	146.32
488430011	146.32	488140010	146.32
488430012	146.32	488140011	146.32
488430013	146.32	488140012	146.32

Community Facilities District No. 1 (Park Maintenance) FY 2019/20 Tax Roll

APN	CFD No. 1 FY 2019/20 Applied Rate	APN	CFD No. 1 FY 2019/20 Applied Rate
488430014	146.32	488140013	146.32
488430015	146.32	488140014	146.32
488430016	146.32	488140015	146.32
488430017	146.32	488140016	146.32
488430018	146.32	488140017	146.32
488430019	146.32	488140018	146.32
488430020	146.32	488140019	146.32
488430021	146.32	488140020	146.32
488430022	146.32	488140021	146.32
488430023	146.32	488140022	146.32
488430024	146.32	488140023	146.32
488430025	146.32	488140024	146.32
488430026	146.32	488140025	146.32
488430027	146.32	488140026	146.32
488430028	146.32	488140027	146.32
488430029	146.32	488140028	146.32
488430030	146.32	488140029	146.32
488430031	146.32	488140030	146.32
488430032	146.32	488140031	146.32
488430033	146.32	488140032	146.32
488430034	146.32	488140033	146.32
488430035	146.32	488140034	146.32
488430036	146.32	488140035	146.32
488430037	146.32	488140036	146.32
488430038	146.32	488140037	146.32
488430039	146.32	488140038	146.32
488430040	146.32	488140039	146.32
488430041	146.32	488140040	146.32
488430042	146.32	488140041	146.32
488430043	146.32	488140042	146.32
488430044	146.32	488140043	146.32
488430045	146.32	488140044	146.32
488430046	146.32	488370001	146.32
488430047	146.32	488370002	146.32
488430048	146.32	488370003	146.32
488430049	146.32	488370004	146.32
488430050	146.32	488370005	146.32
488430051	146.32	488370006	146.32
488430052	146.32	488370007	146.32
488430053	146.32	488370008	146.32
488430054	146.32	488370009	146.32
488430055	146.32	488370010	146.32
488430056	146.32	488370011	146.32
488430057	146.32	488370012	146.32
488430058	146.32	488370013	146.32
488430059	146.32	488370014	146.32
488430060	146.32	488370015	146.32
488430061	146.32	488370016	146.32
488440001	146.32	488370017	146.32
488440002	146.32	488370018	146.32

Community Facilities District No. 1 (Park Maintenance) FY 2019/20 Tax Roll

APN	CFD No. 1 FY 2019/20 Applied Rate	APN	CFD No. 1 FY 2019/20 Applied Rate
488440003	146.32	488370019	146.32
488440004	146.32	488370020	146.32
488440005	146.32	488370021	146.32
488440006	146.32	488370022	146.32
488440007	146.32	488370023	146.32
488440008	146.32	488370024	146.32
488440009	146.32	488370025	146.32
488440010	146.32	488370026	146.32
488440011	146.32	488370027	146.32
488440012	146.32	488370028	146.32
488440013	146.32	488370029	146.32
488440014	146.32	488370030	146.32
488440015	146.32	488370031	146.32
488440016	146.32	488370032	146.32
488440017	146.32	488370033	146.32
488440018	146.32	488371001	146.32
488440019	146.32	488371002	146.32
488440020	146.32	488371003	146.32
488440021	146.32	488371004	146.32
488440022	146.32	488371005	146.32
488440023	146.32	488371006	146.32
488440024	146.32	488371007	146.32
488440025	146.32	488371008	146.32
488440026	146.32	488371009	146.32
488440027	146.32	488371010	146.32
488440028	146.32	488371011	146.32
488440029	146.32	488371012	146.32
488440030	146.32	488371013	146.32
488440031	146.32	488371014	146.32
488440032	146.32	488371015	146.32
488440033	146.32	488371016	146.32
488440034	146.32	488371017	146.32
488440035	146.32	488371018	146.32
488440036	146.32	488371019	146.32
488440037	146.32	488371020	146.32
488440038	146.32	488371021	146.32
488440039	146.32	488371022	146.32
488440040	146.32	488380001	146.32
488440041	146.32	488380002	146.32
488440042	146.32	488380003	146.32
488440043	146.32	488380004	146.32
488440044	146.32	488380005	146.32
488440045	146.32	488380006	146.32
488440046	146.32	488380007	146.32
488440047	146.32	488380008	146.32
488440048	146.32	488380009	146.32
488440049	146.32	488380010	146.32
488440050	146.32	488380011	146.32
488440051	146.32	488380012	146.32
488440052	146.32	488380013	146.32

Community Facilities District No. 1 (Park Maintenance) FY 2019/20 Tax Roll

APN	CFD No. 1 FY 2019/20 Applied Rate	APN	CFD No. 1 FY 2019/20 Applied Rate
488440053	146.32	488380014	146.32
488440054	146.32	488380015	146.32
488440055	146.32	488380016	146.32
488440056	146.32	488380017	146.32
488440057	146.32	488380018	146.32
488440058	146.32	488380019	146.32
488440059	146.32	488380020	146.32
488440060	146.32	488380021	146.32
488440061	146.32	488380022	146.32
488440062	146.32	488380023	146.32
488440063	146.32	488380024	146.32
488440064	146.32	488380025	146.32
488440065	146.32	488380026	146.32
488440066	146.32	488380027	146.32
488440067	146.32	488380028	146.32
488450001	146.32	488380029	146.32
488450002	146.32	488380030	146.32
488450003	146.32	488380031	146.32
488450004	146.32	488380032	146.32
488450005	146.32	488380033	146.32
488450006	146.32	488380034	146.32
488450007	146.32	488380035	146.32
488450008	146.32	488380036	146.32
488450009	146.32	488380037	146.32
488450010	146.32	488380038	146.32
488450011	146.32	488380039	146.32
488450012	146.32	488380040	146.32
488450013	146.32	488380041	146.32
488450014	146.32	488390017	34,531.52
488450015	146.32	488390018	2,926.40
488450016	146.32	488410023	146.32
488450017	146.32	488410024	146.32
488450018	146.32	488410025	146.32
488450019	146.32	488410026	146.32
488450020	146.32	488410027	146.32
488450021	146.32	488410028	146.32
488450022	146.32	488410029	146.32
488450023	146.32	488410030	146.32
488450024	146.32	488410031	146.32
488450025	146.32	488410032	146.32
488450026	146.32	488410033	146.32
488450027	146.32	488410034	146.32
488450028	146.32	488410035	146.32
488450029	146.32	488410036	146.32
488450030	146.32	488410037	146.32
488450031	146.32	488410038	146.32
488450032	146.32	488410039	146.32
488450033	146.32	488410040	146.32
488450034	146.32	488410041	146.32
488450035	146.32	488410042	146.32

Community Facilities District No. 1 (Park Maintenance) FY 2019/20 Tax Roll

APN	CFD No. 1 FY 2019/20 Applied Rate	APN	CFD No. 1 FY 2019/20 Applied Rate
488450036	146.32	488410043	146.32
488450037	146.32	488410044	146.32
488450038	146.32	488410045	146.32
488450039	146.32	488410046	146.32
488450040	146.32	488410047	146.32
488450041	146.32	488410048	146.32
488450042	146.32	488410049	146.32
488450043	146.32	488410050	146.32
488450044	146.32	488410051	146.32
488450045	146.32	488410052	146.32
488450046	146.32	473174013	146.32
Subtotal 1	\$634,004.56	Subtotal 2	\$684,631.28

Special Tax Levy	
Subtotal 1	\$634,004.56
Subtotal 2	\$684,631.28
Total Tax Roll:	\$1,318,635.84