

Location Map

CITY OF MORENO VALLEY REZONED HIGH DENSITY CALCULATION 3

The information shown on this map was compiled from the Riverside County GIS and the City of Moreno Valley GIS. The land base and facility information on this map is for display purposes only and should not be relied upon without independent verification as to its accuracy. Data and information on this map are provided for informational purposes only. The City of Moreno Valley will not be held responsible for any claims, losses or damages resulting from the use of this map. This map is not to be reprinted or resold.

Map Produced by Moreno Valley Geographic Information System

Exhibit:
C

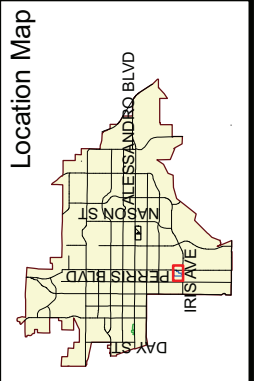
Map Status: DRAFT
G:\ArcMap\Neighborhood Preservation\VacantProperties_2007\HEM\2009\HousingElement_Calc3 10272009\HousingElement_Calc3 Print Date: December 15, 2009

Map Legend

- Calculation 3 - Parcels

Attachment A

Map Status: DRAFT
G:\ArcMap\Neighborhood Preservation\VacantProperties_2007\HEM\2009\HousingElement_Calc3 10272009\HousingElement_Calc3 Print Date: December 15, 2009



Map Legend

- Calculation 4 - Parcels

Attachment A

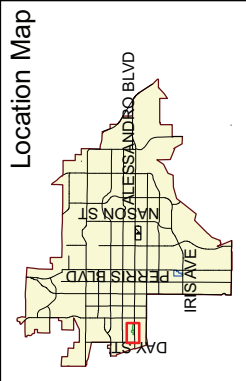
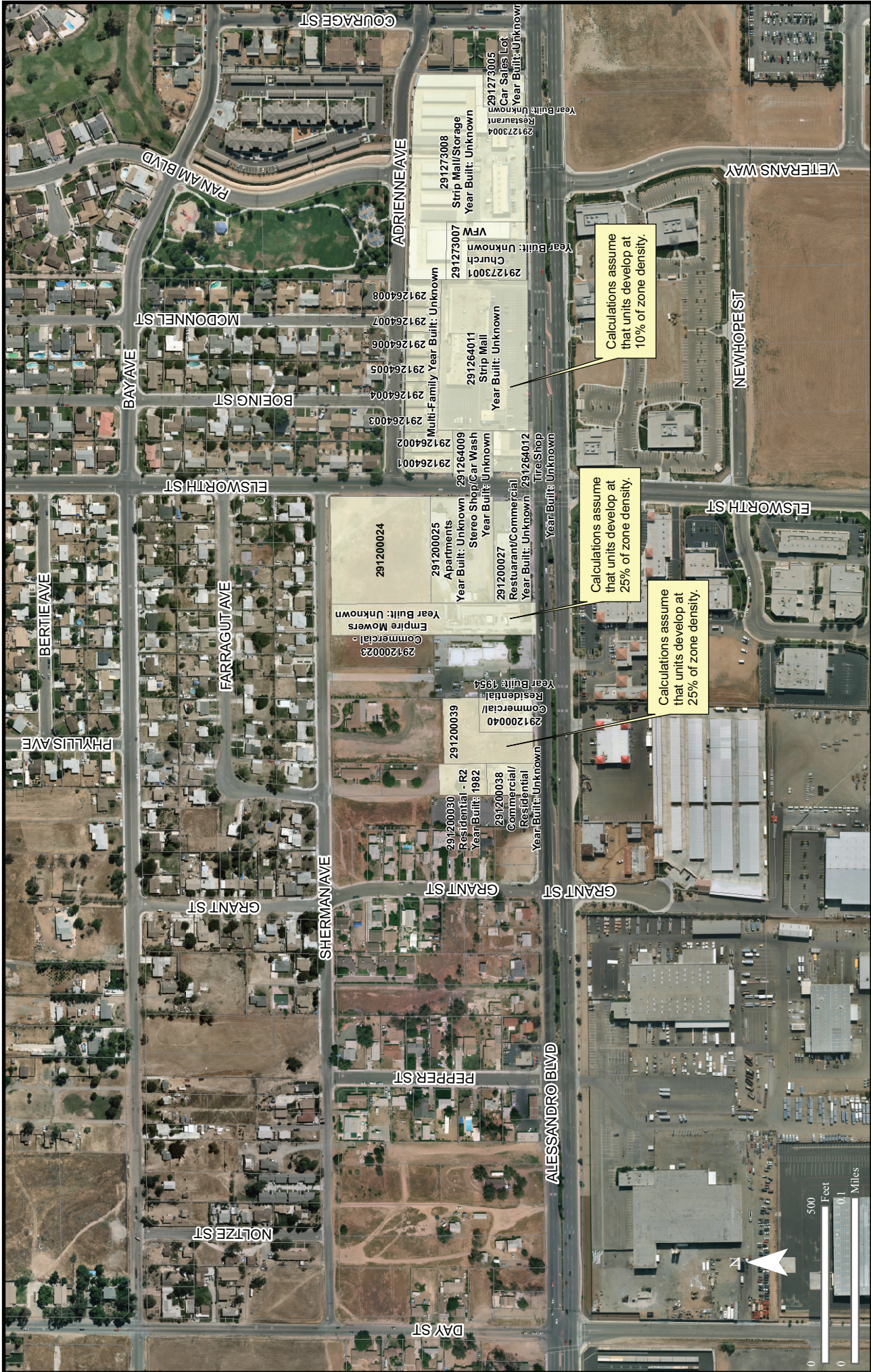
CITY OF MORENO VALLEY
REZONED HIGH DENSITY
CALCULATION 4

Exhibit: D

Map Status: DRAFT
 G:\ArcMap\Neighborhood Preservation\VacantProperties_2007\HEMaps2009\HousingElement_Calc4 10272009\HousingElement_Calc4
 Print Date: December 15, 2009

The information shown on this map was compiled from the Riverside County GIS and the City of Moreno Valley GIS. The land base and facility information on this map is for display purposes only and should not be relied upon without independent verification as to its accuracy. Data and information on this map are the property of Moreno Valley and will not be held responsible for any claims, losses or damages resulting from the use of this map. This map is not to be reprinted or resold.

Map Produced by **Moreno Valley Geographic Information System**



Map Legend

- Calculation 5 - Parcels

Attachment A

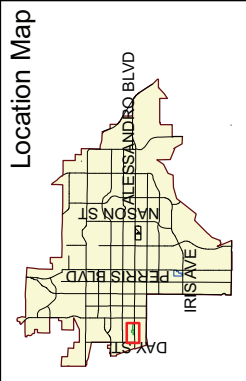
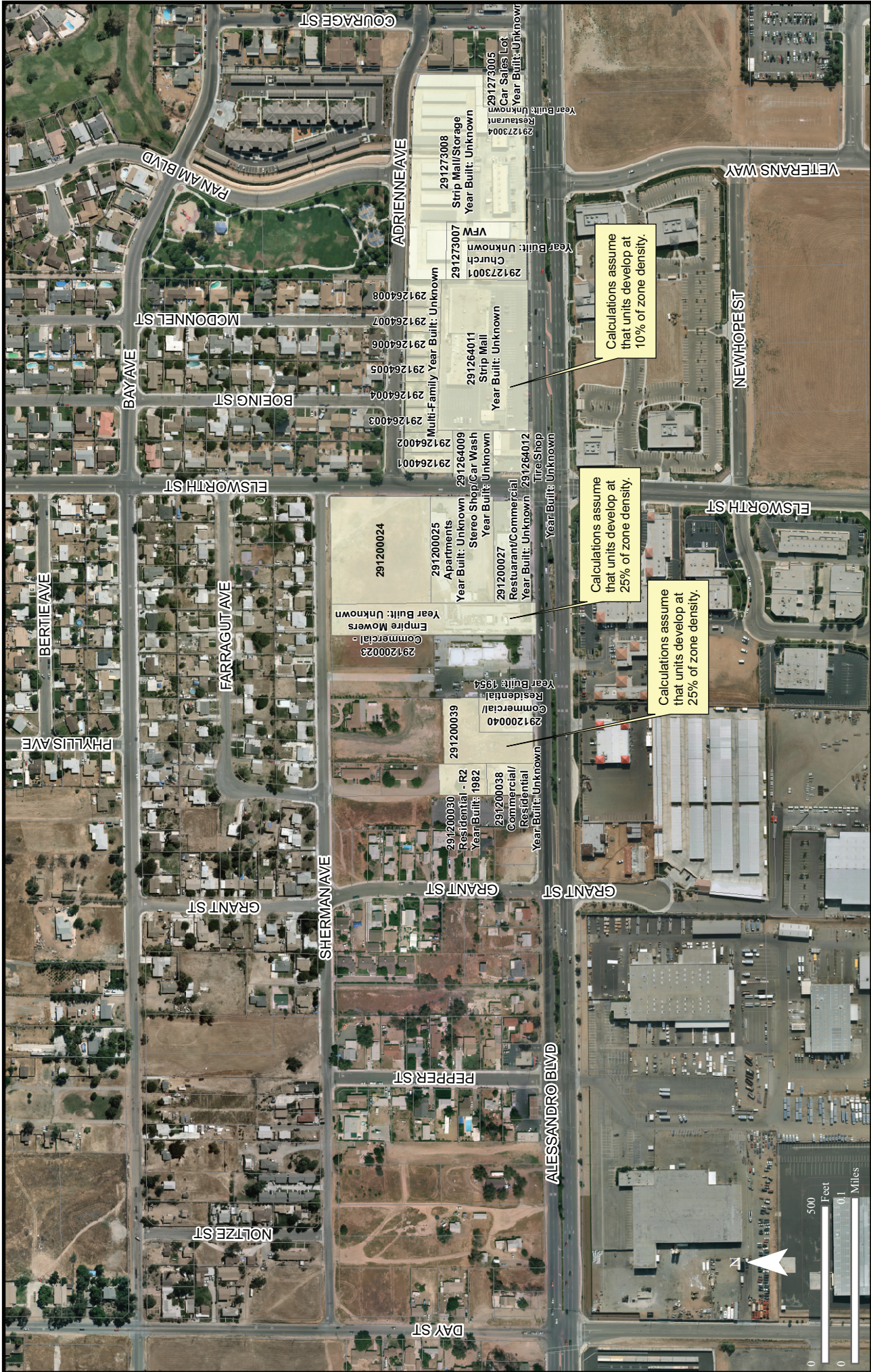
CITY OF MORENO VALLEY REZONED HIGH DENSITY CALCULATION 5

Exhibit: E

Map Status: DRAFT
 G:\ArcMap\Neighborhood Preservation\VacantProperties_2007\HEMaps\2009\HousingElement_10272009\HousingElement_Calc5
 Print Date: July 12, 2010

The information shown on this map was compiled from the Riverside County GIS and the City of Moreno Valley GIS. The land base and facility information on this map is for display purposes only and should not be relied upon without independent verification as to its accuracy. Data and information on this map are the property of the City of Moreno Valley and are provided for informational purposes only. The City of Moreno Valley will not be held responsible for any claims, losses or damages resulting from the use of this map. This map is not to be recycled or resold.

Map Produced by **Moreno Valley Geographic Information System**



Map Legend

- Yellow box: Calculation 5 - Parcels

Attachment A

CITY OF MORENO VALLEY REZONED HIGH DENSITY CALCULATION 5

Exhibit: E

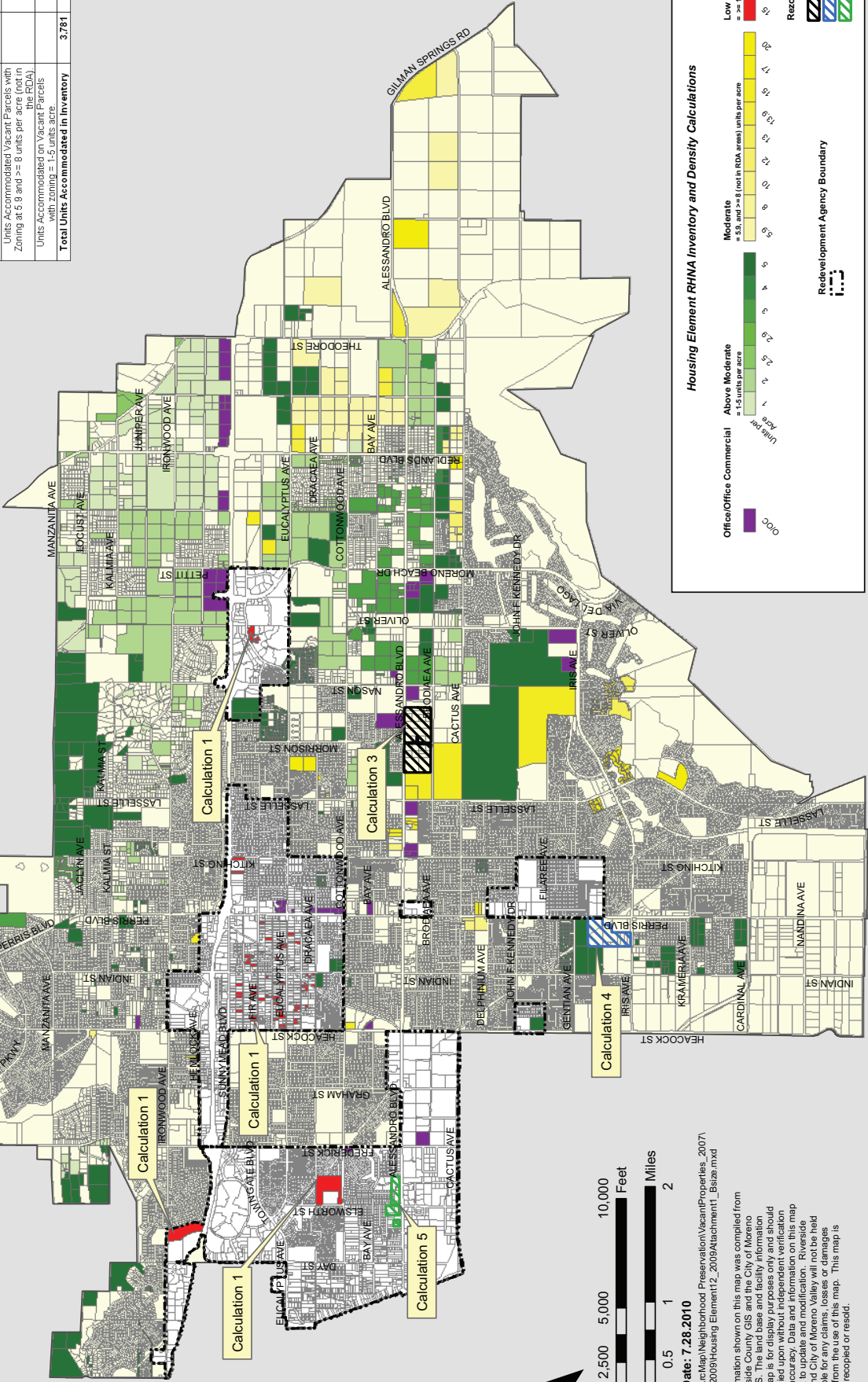
Map Status: DRAFT
 G:\ArcMap\Neighborhood Preservation\VacantProperties_2007\HEMaps\2009\HousingElement_10272009\HousingElement_Calc5
 Print Date: July 12, 2010

The information shown on this map was compiled from the Riverside County GIS and the City of Moreno Valley GIS. The land base and facility information on this map is for display purposes only and should not be relied upon without independent verification as to its accuracy. Data and information on this map are the property of the City of Moreno Valley and are provided for informational purposes only. The City of Moreno Valley will not be held responsible for any claims, losses or damages resulting from the use of this map. This map is not to be recycled or resold.

Map Produced by Moreno Valley Geographic Information System

CITY OF MORENO VALLEY HOUSING ELEMENT 2008 HOUSING SITES INVENTORY

Sites Inventory	Low and Very Low Units	Moderate Units	Above Moderate Units	Total
Units Accommodated on Vacant Parcels	866			866
Units Accommodated on Parcels Rezoned to 30 Units per acre at Hospital and Alessandri.	1,780			1,780
Units Accommodated on Parcels Rezoned to 30 Units per Acre at Perms and this zoning is not subject to the RDA.	913			913
Units Accommodated on Parcels Rezoned to 30 Units per Acre at Alessandri and Elsworth.	122			122
Units Accommodated Vacant Parcels with Zoning at 5.9 and >= 8 units per acre (not in the RDA).		8,234		8,234
Units Accommodated on Vacant Parcels with zoning = 1-5 units per acre.		8,879	8,879	17,758
Total Units Accommodated in Inventory	3,761	8,234	8,879	20,874



Housing Element RHNA Inventory and Density Calculations

Office/Office Commercial = 1-5 units per acre

Above Moderate = 1-5 units per acre

Moderate = 5.9 and >= 8 (not in RDA areas) units per acre

Low & Very Low = >= 15 units per acre (in RDA areas)

Rezoned High Density

- Calculation 3
- Calculation 4
- Calculation 5

Redevelopment Agency Boundary

Attachment 1

0 2,500 5,000 10,000 Feet

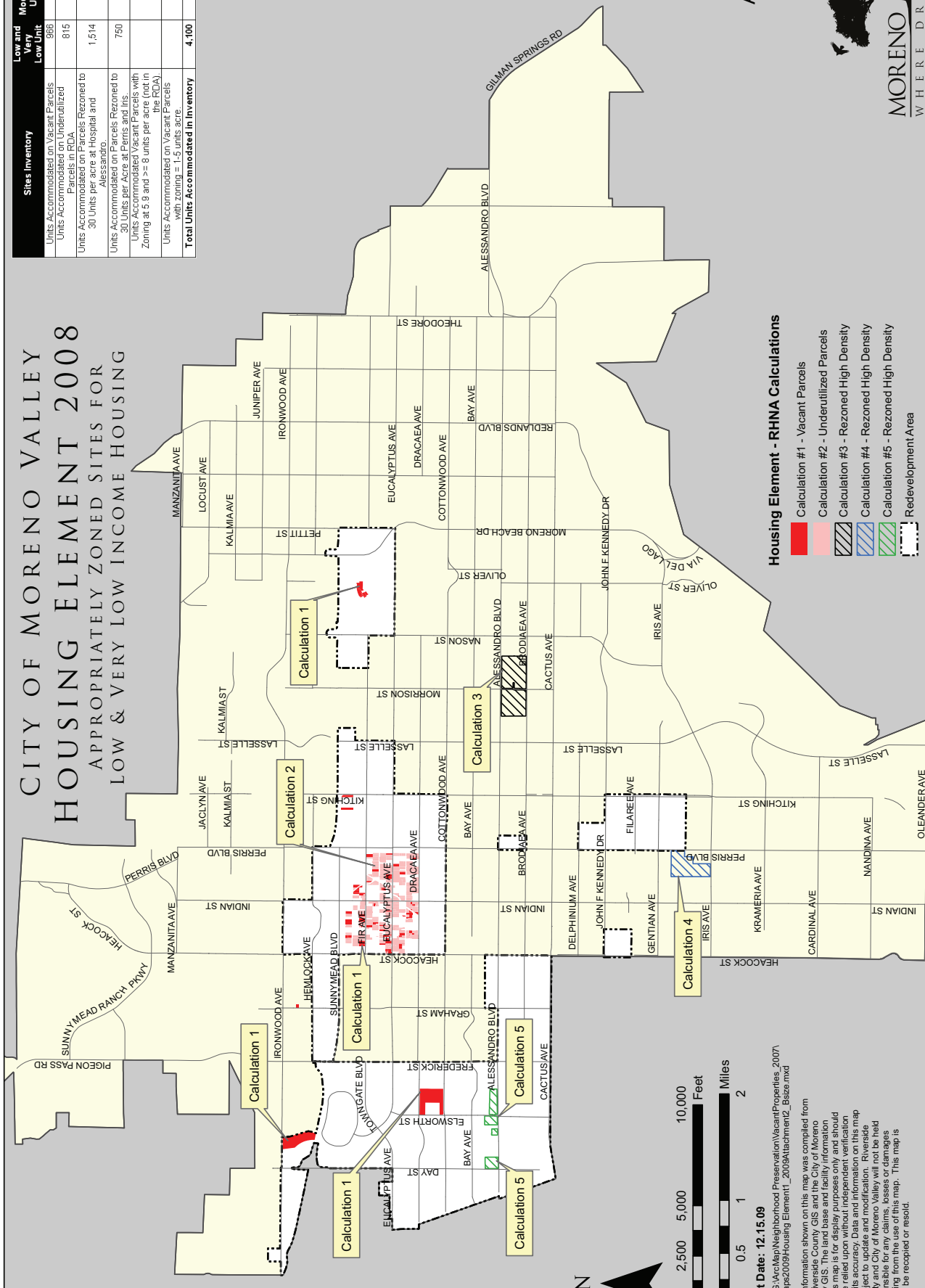
0 0.5 1 2 Miles

Print Date: 7.28.2010
 File: G:\ArcMap\Neighborhood Presentation\VacantProperties_20071\HEMaps2009\Housing Element12_2009\Attachment1_Bsiza.mxd

The information shown on this map was compiled from the Riverside County GIS and the City of Moreno Valley GIS. The land base and facility information on this map is for display purposes only and should not be relied upon without independent verification. This map is subject to update and modification. Riverside County and City of Moreno Valley will not be held responsible for any claims, losses or damages resulting from the use of this map. This map is not to be recycled or resold.

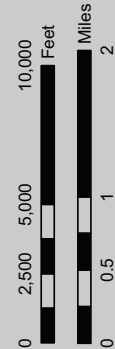
CITY OF MORENO VALLEY HOUSING ELEMENT 2008 APPROPRIATELY ZONED SITES FOR LOW & VERY LOW INCOME HOUSING

Sites Inventory	Low and Very Low Unit	Moderate Units	Above Moderate Units	Total
Units Accommodated on Vacant Parcels	966			966
Units Accommodated on Underutilized Parcels in RDA	815			815
Units Accommodated on Parcels Re-zoned to 30 Units per acre at Hospital and	1,514			1,514
Units Accommodated on Parcels Re-zoned to 30 Units per Acre at Perms and Inrs	750			750
Units Accommodated Vacant Parcels with Zoning at 6.9 and >= 8 units per acre (not in the RDA)		8,234		8,234
Units Accommodated on Vacant Parcels with zoning = 1.5 units/acre		8,879		8,879
Total Units Accommodated in Inventory	4,100	8,234	8,879	21,188



Housing Element - RHNA Calculations

- Calculation #1 - Vacant Parcels
- Calculation #2 - Underutilized Parcels
- Calculation #3 - Re-zoned High Density
- Calculation #4 - Re-zoned High Density
- Calculation #5 - Re-zoned High Density
- Redevelopment Area



Print Date: 12.15.09
 File: G:\ArcMap\Neighborhood Presentation\VacantProperties_20071.HEMaps2009\Housing Element1_2009\Attachment2_Base.mxd

The information shown on this map was compiled from the Riverside County GIS and the City of Moreno Valley GIS. The land base and facility information on this map is for display purposes only and should not be used for engineering or other purposes. It is subject to update and modification. Riverside County and City of Moreno Valley will not be held responsible for any claims, losses or damages resulting from the use of this map. This map is not to be recycled or resold.

